

Rheticus™ Land Monitoring Services

At Italian Copernicus User Forum

Giovanni Sylos Labini

Planetek Italia CEO

Rome 15 May 2018

Since 1994...



Bari



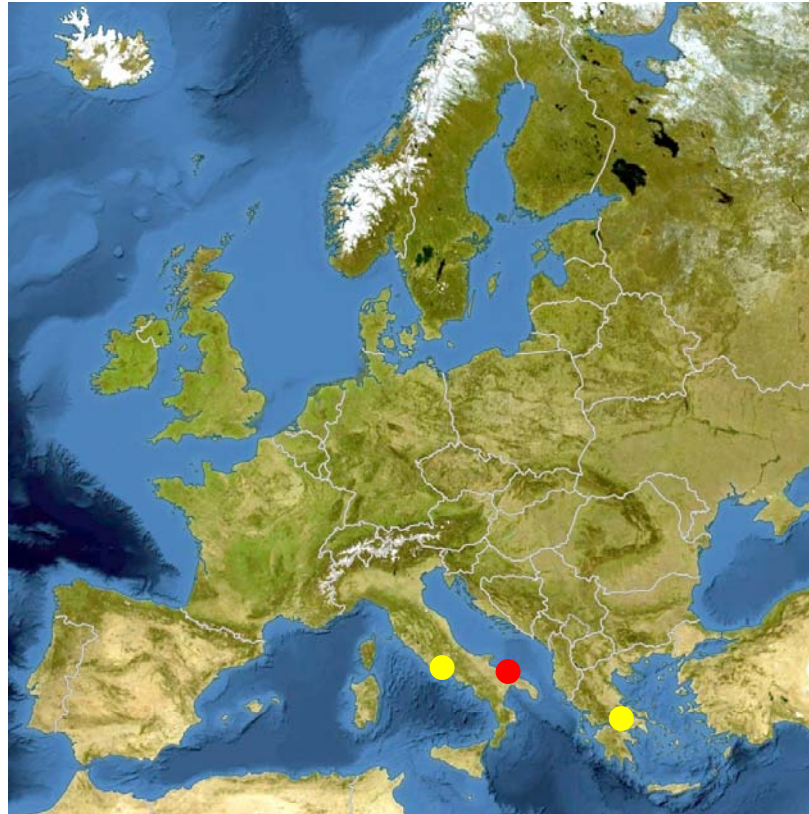
Athens



Roma



Bari



Earth Observation



Spatial Data
Infrastructure & GIS



Location Based
Systems



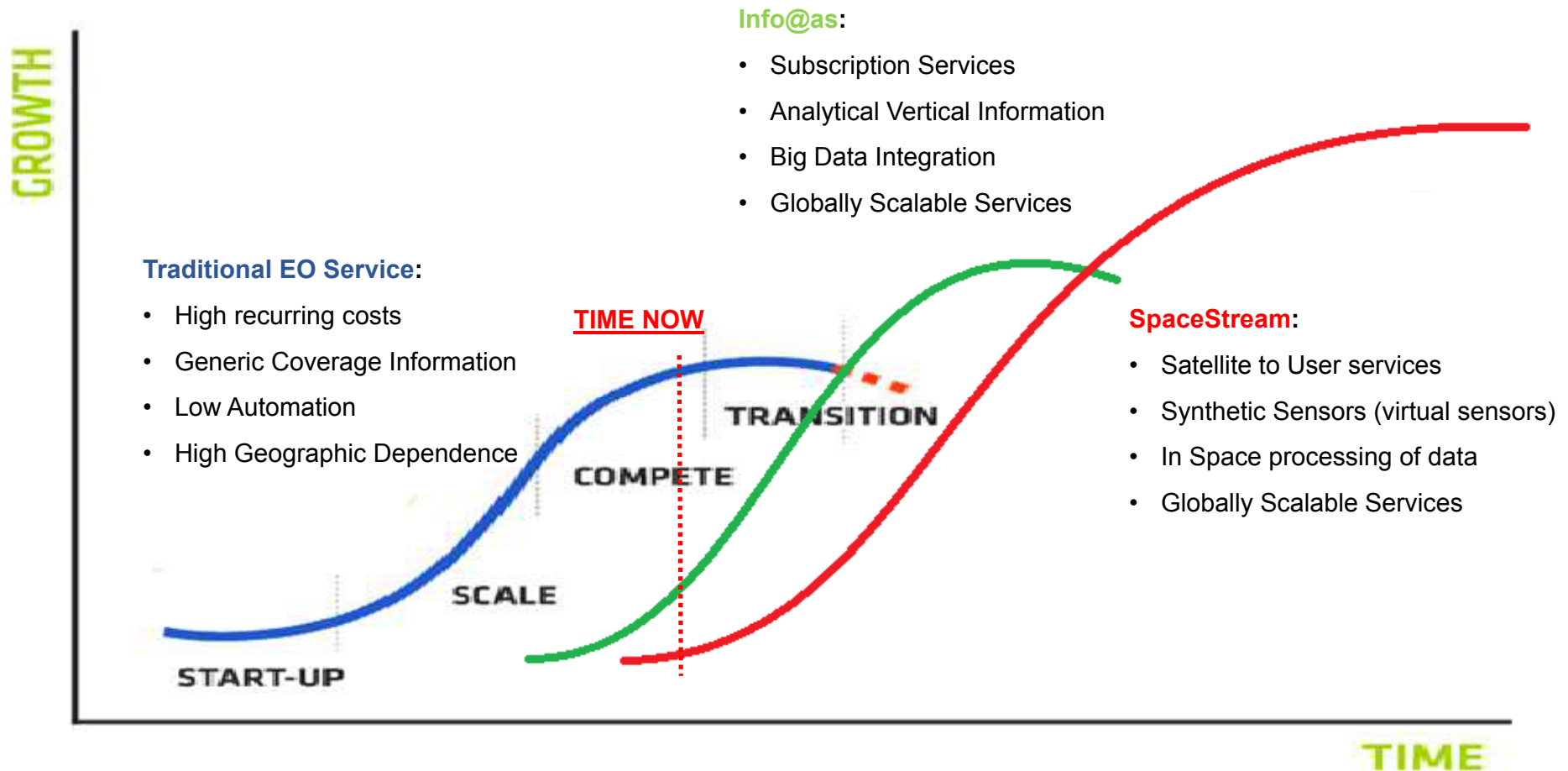
Space Software





- Cloud-Based
- Subscription-Based
- Satellite Data
- (Geo) Open Data
- Continual Updates
- Analytics, Maps, Reports

The 3 Horizons of innovation in Planetek



From GEO Services to GEO-Analytics



- Planetek Geoanalytics belongs to a long experience in development of Satellite Based Geoservices. These **bespoke** services where generally project based and with relevant recurring costs.
- Rheticus™ provides info@as services, **globally scalable**, with low recurrent costs.
- Rethicus™ will benefit from dat@as and s@as provided by DIAS

Rheticus® : Data Processing Workflow

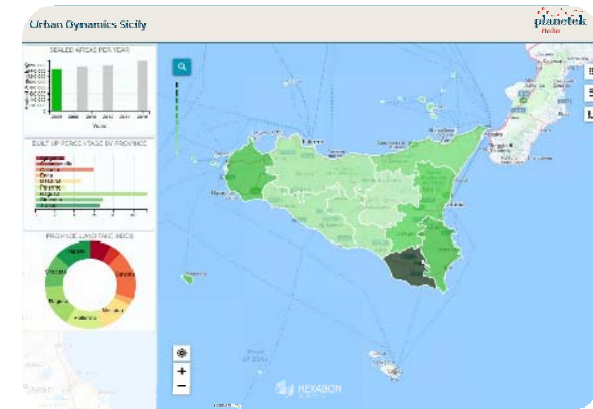
Satellite Data



Automatic Processing



Info as a Service



Rheticus® is an automatic cloud-based geo-information service platform for land, water and infrastructure monitoring

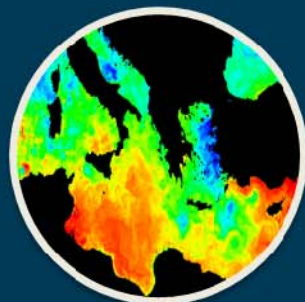


Displacement

Landslides

Subsidence

Infrastructure Stability



Marine

Water Quality

Algae Bloom

Aquaculture

Fishing



Land

Land Cover

Wildfires



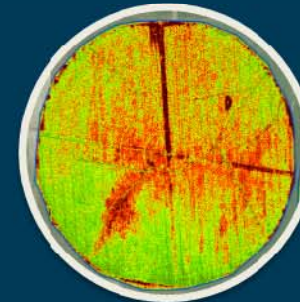
Urban Dynamics

Urban Changes

Urban Heat Islands

Soil Sealing

Infrastructures



Agriculture

Crop Monitoring

Vegetation Heath

Yield Estimation

Illegal Crops

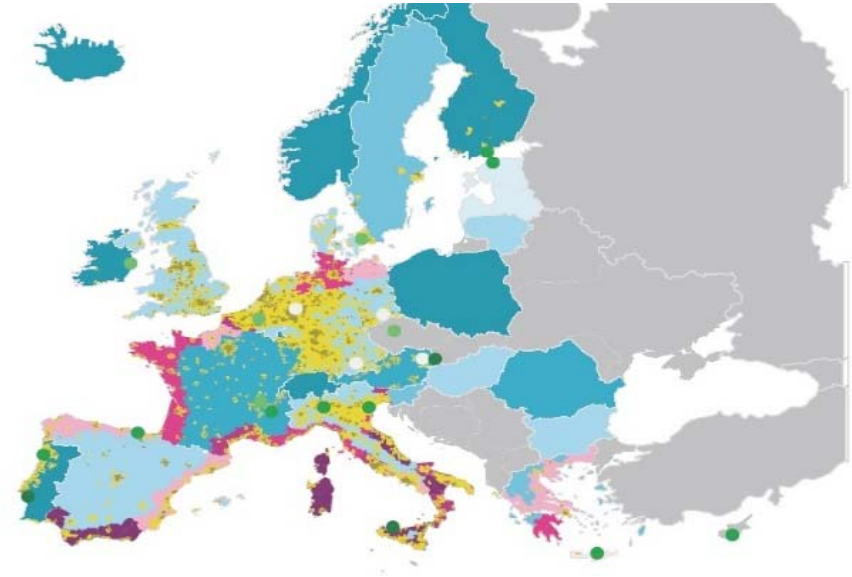
Rheticus Services

Pan European monitoring

GIO Land

Project of the EU Copernicus programme.

Land cover datasets on 39 European countries.



Mapping the soil loss

A homogeneous map of high resolution land cover data.
Built-up areas, including degree of soil sealing, for 39 countries in Europe.



Mapping the soil loss in Italy

Support to ISPRA for the Very High Resolution Layer (VHRL) of built-up with 5 meter spatial resolution

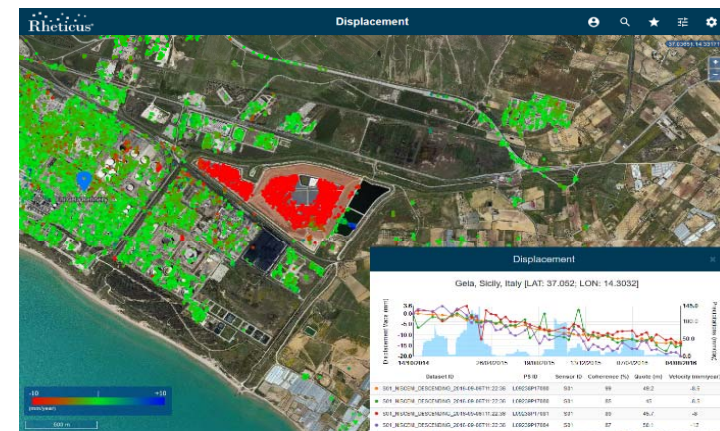


Geo-Info as a Service

Automatic cloud-based geo-information & geo-analytics services.

From raw data to knowledge in short time, automatically and cost-efficient.

Urban dynamics, landslide and infrastructure stability, wildfire burned areas, coastal sea waters quality.

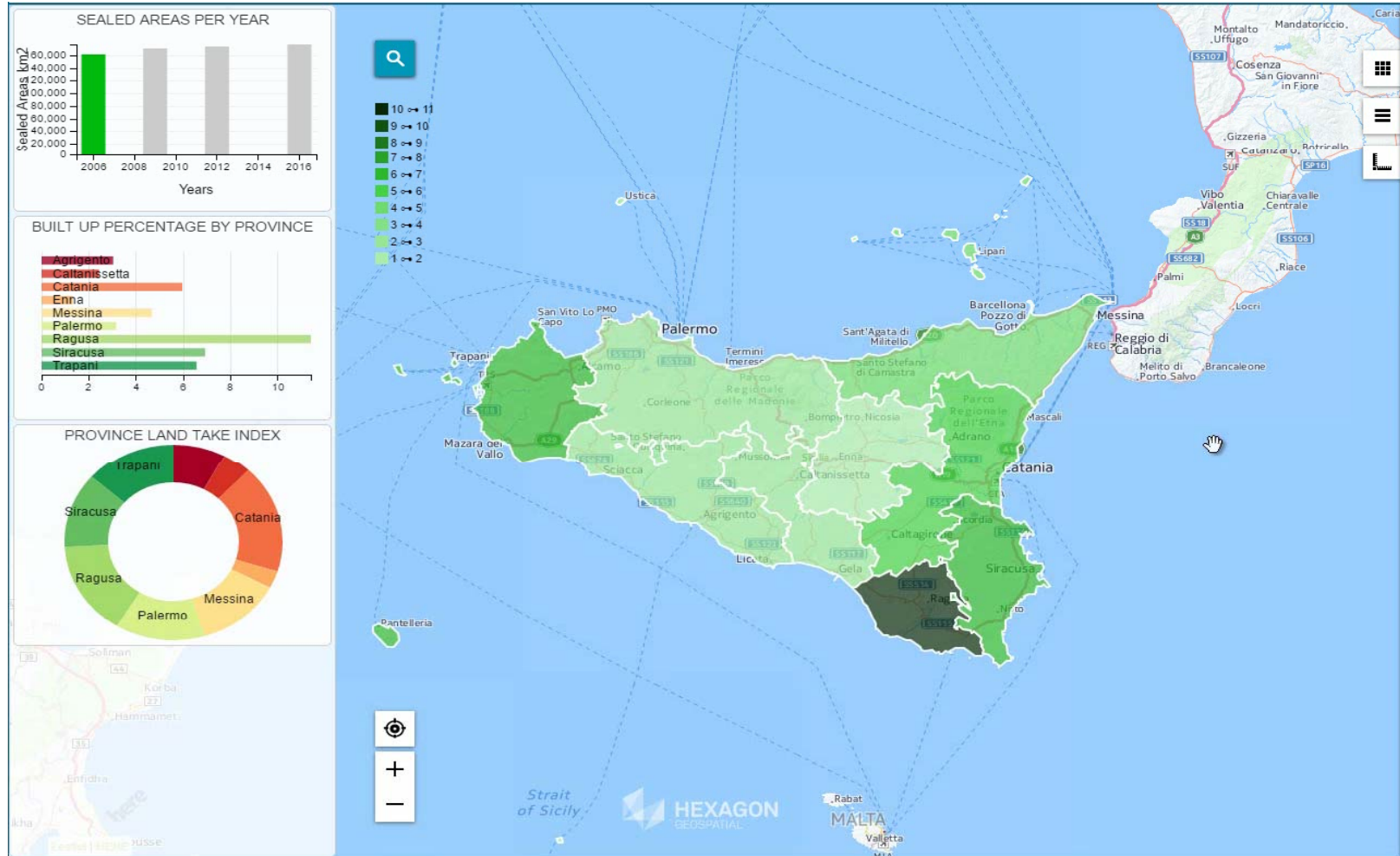


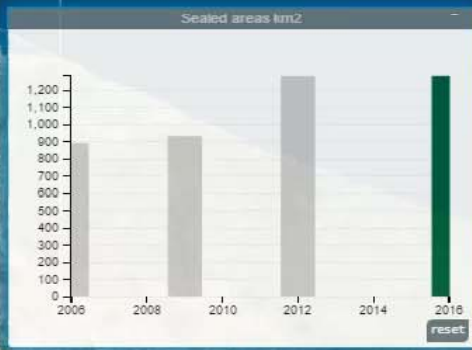
www.rheticus.eu

Powered by



Smart M.Apps





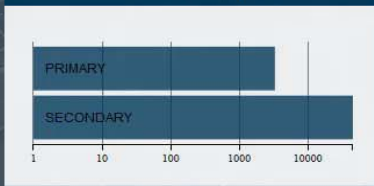
Ground Motion monitoring: Rheticus[®] Network Alert



There are **59** alarms and **3476** warnings in 48696 selected segments



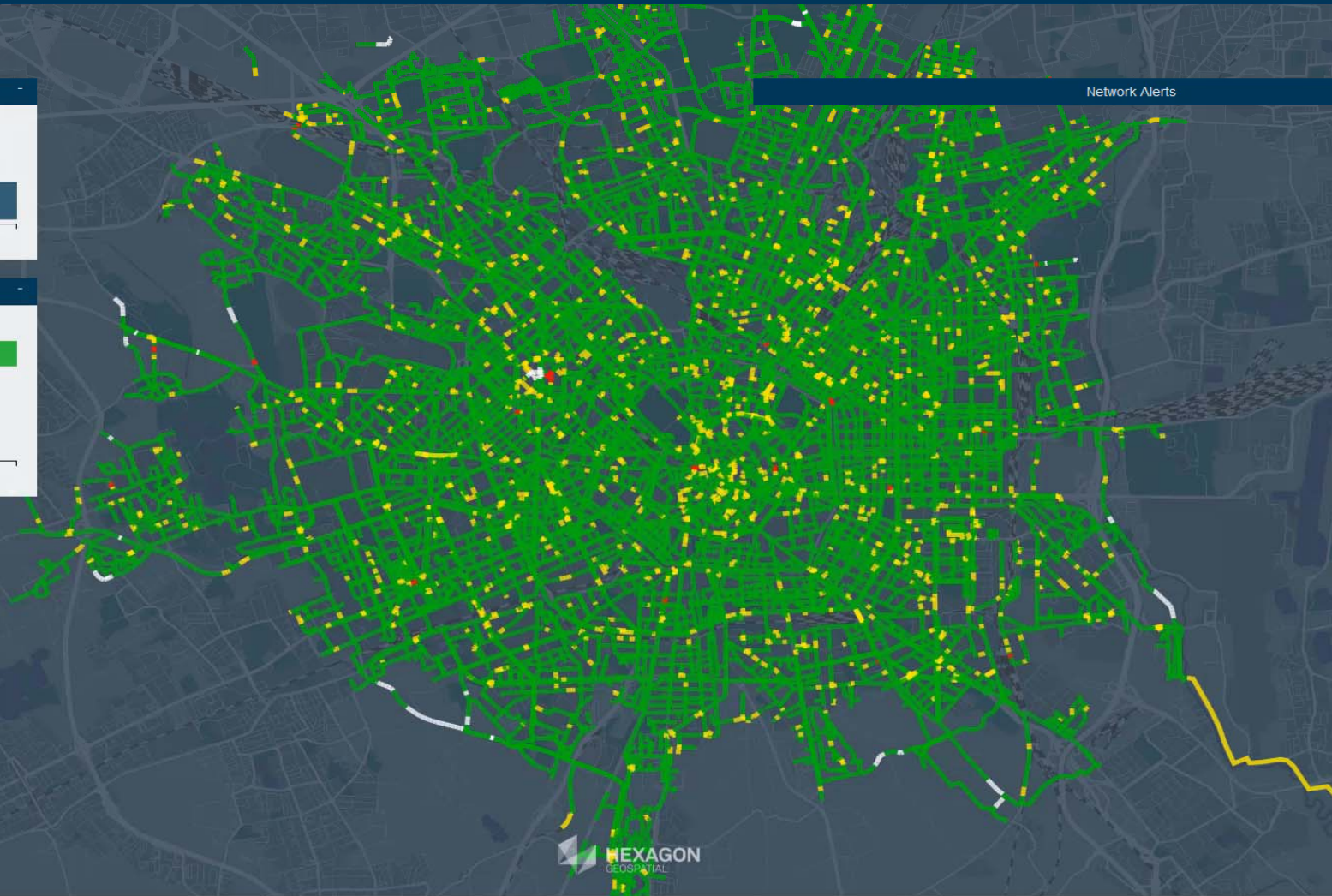
Network segments by level



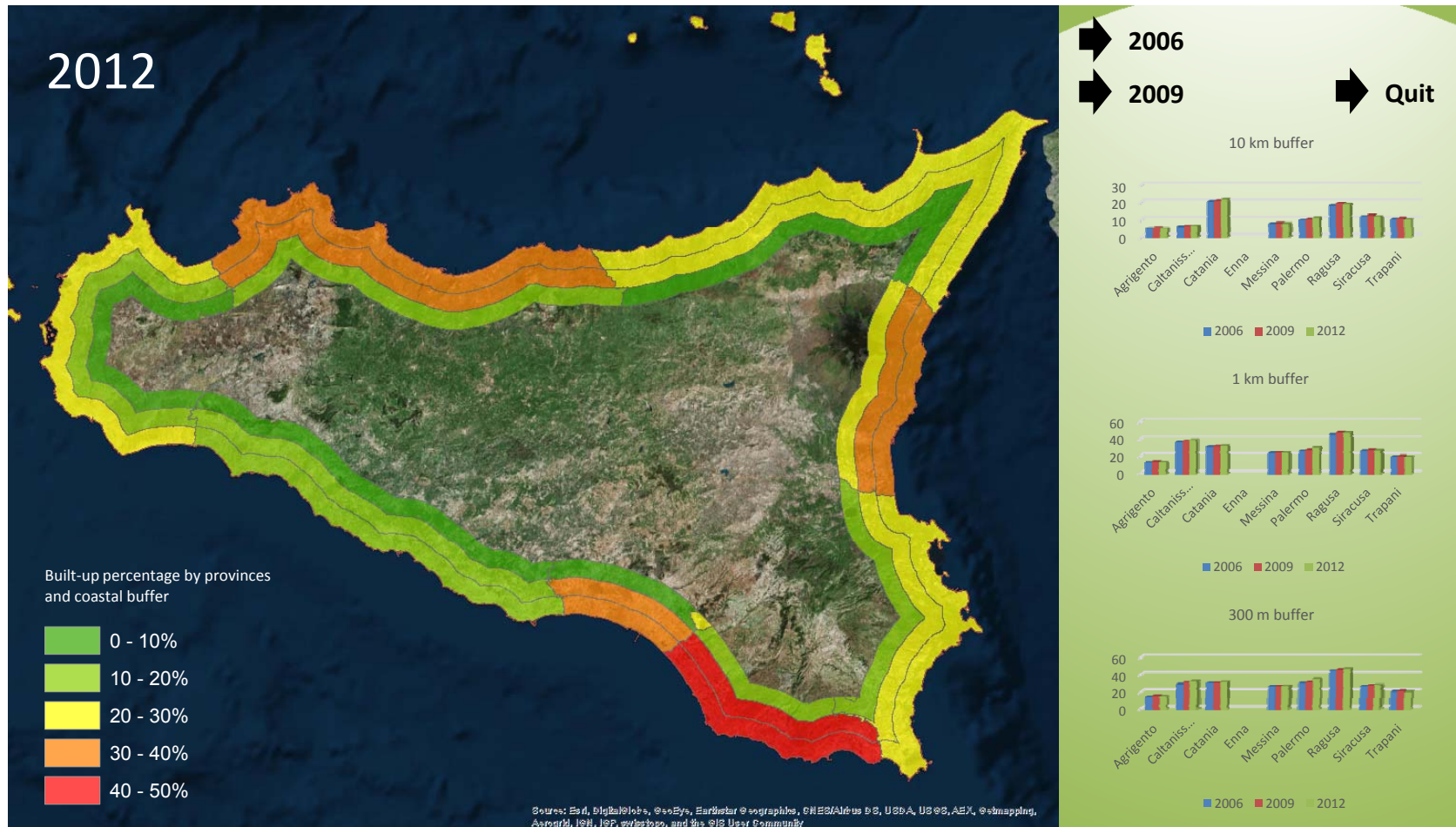
Network segments by status



Network Alerts



Analysis of the coastal soil sealing



Let's keep in touch

sylos@planetek.it



www.planetek.it



blog.planetek.it



[/planetekitalia](https://www.youtube.com/channel/UC...)



[@planetek](https://twitter.com/planetek)



[/planetek](https://www.facebook.com/planetek)



www.linkedin.com/company/planetek-italia