

---

# 26<sup>th</sup> OF SEPTEMBER 2007: THE VENICE FLOOD POST EVENT COMMISSIONER ACTIVITY

---

**Eng. Mariano Carraro**

Deputy Commissioner for the emergency concerning the 26<sup>th</sup> of September 2007  
extreme meteorological event that affected part of the territory of Veneto Region



**Commissario Delegato per l'emergenza concernente gli eccezionali eventi meteorologici  
del 26 settembre 2007 che hanno colpito parte del territorio della Regione Veneto**



Presidenza del Consiglio dei Ministri  
Dipartimento della Protezione Civile

Commissario Delegato per l'Emergenza concernente gli eccezionali eventi meteorologici del 26 settembre 2007 che hanno colpito parte del territorio della Regione Veneto. OPCM n.3621 del 18/10/2007

# METHEOROLOGICAL SETTING:

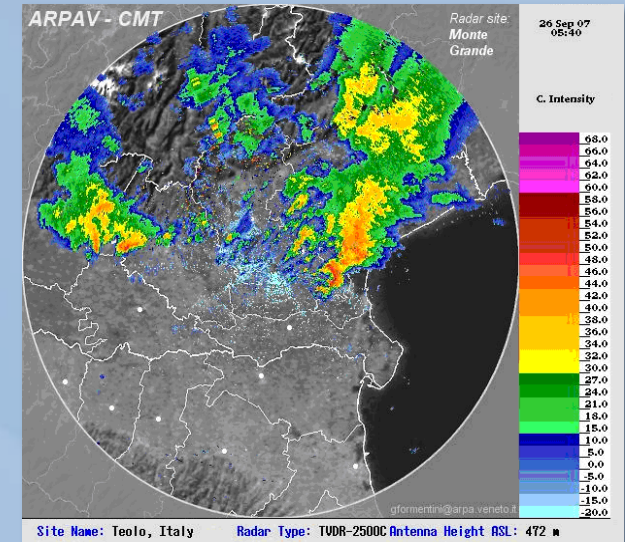


Commissario Delegato per l'emergenza concernente gli eccezionali eventi meteorologici del 26 settembre 2007 che hanno colpito parte del territorio della Regione Veneto

## The extreme events in the Venetian area.

The 26<sup>th</sup> of September 2007, early in the morning, an intense thunderstorm affected the coastal area of Veneto Region; the thunderstorm was focused on the surroundings of Venice, undermining sewerage and urban draining system.

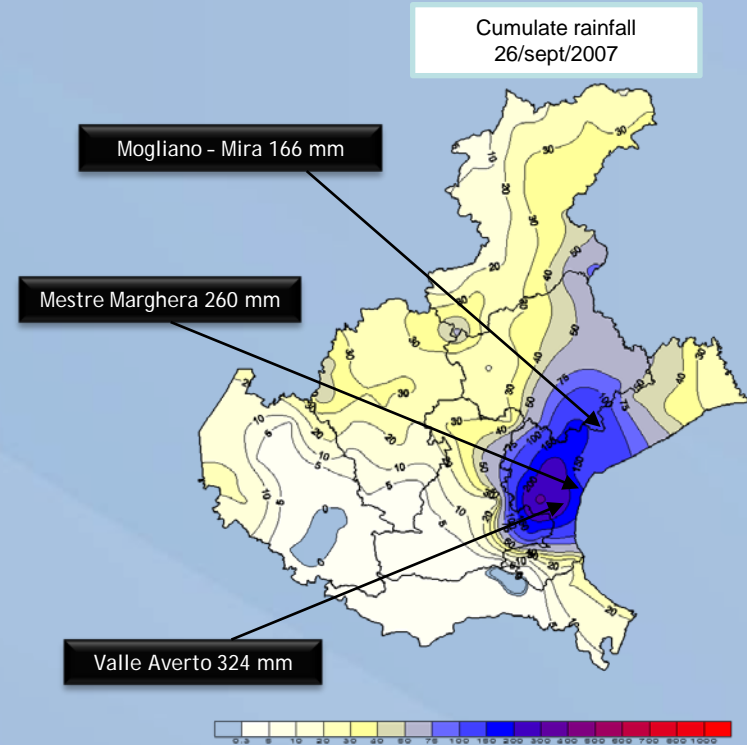
The Venetian coastal area is characterized by the possibility to be affected by extreme meteorological events, in fact, a similar thunderstorm affected the same area in September 2006, causing damages at houses and infrastructures. A similar event interested the same area in August 2010



The intense rainfall was concentrated on a small area.

At the end of the event, in the area most affected by the thunderstorm the rain-gauges recorded as cumulate rainfall:

Valle Averso (VE): **324** mm  
 Mestre (VE): **260** mm  
 Mogliano (TV) - Mira (VE): **166** mm  
 Codevigo (PD): **160** mm  
 Roncade (TV): **128** mm  
 Cavallino Tre Porti (VE): **123** mm  
 Venezia: **119** mm



The event was concentrated in the space of 6 hours especially between 4:00 AM – 5:00 AM UTC

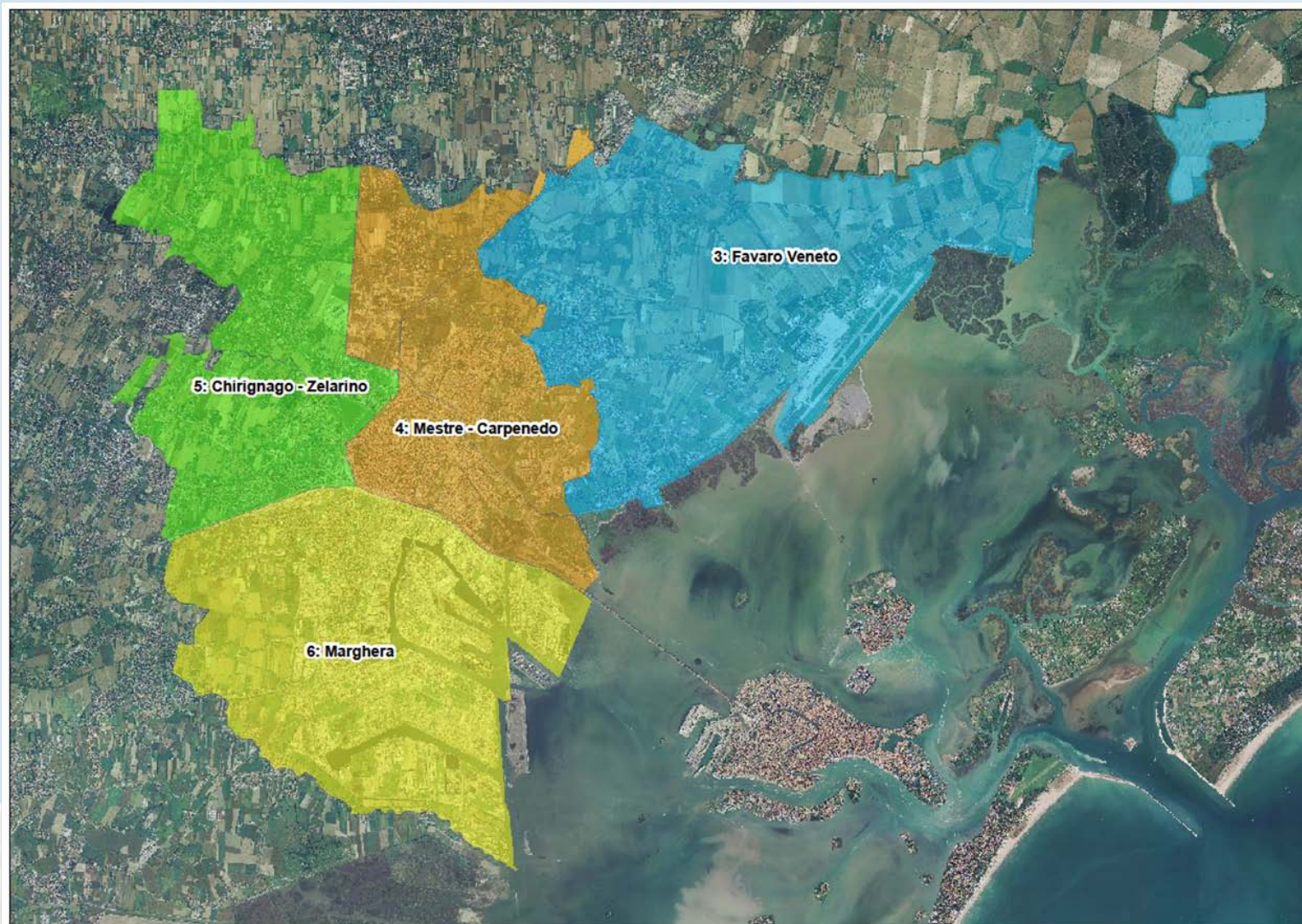
Stazione	Prec. (mm) 5 minutes	Prec. (mm) 30 minutes	Prec. (mm) 1 hour	Prec. (mm) 3 hours	Prec. (mm) 6 hours
Mestre-Marghera	24	90	125	200	250
Valle Averte	17	75	105	250	300

cloudburst:	40	60	80
-------------	----	----	----

**Average annual precipitation for the area  $\cong$  1000 mm.**

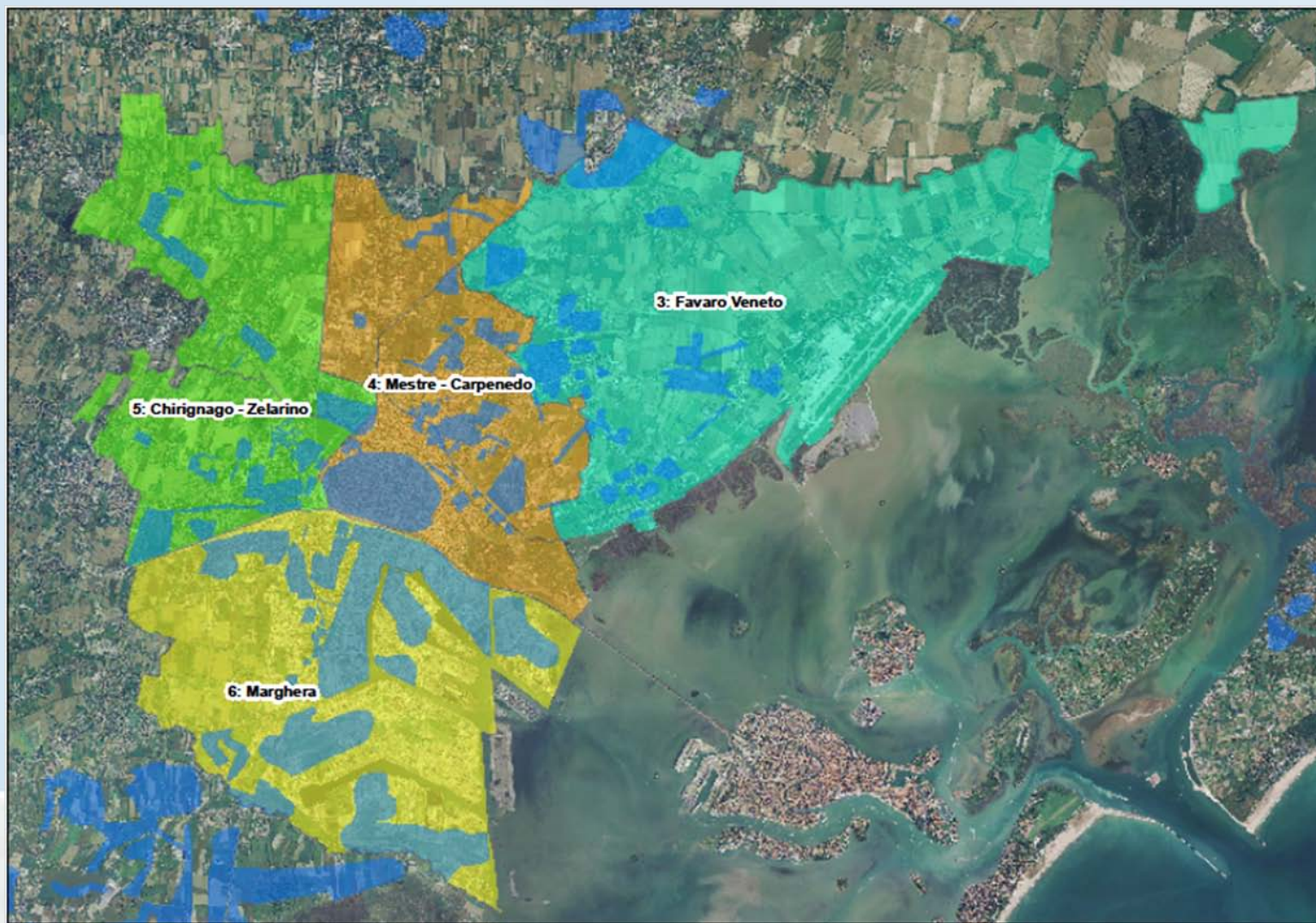


## VENETIAN MAINLAND MUNICIPALITIES



Commissario Delegato per l'emergenza concernente gli eccezionali eventi meteorologici del 26 settembre 2007 che hanno colpito parte del territorio della Regione Veneto

## VENETIAN MAINLAND MUNICIPALITIES – flooded areas (blue color)



Commissario Delegato per l'emergenza concernente gli eccezionali eventi meteorologici del 26 settembre 2007 che hanno colpito parte del territorio della Regione Veneto



### ***EFFECTS:***

Flood caused damages at:

- Infrastructures;
- Houses;
- Agriculture;
- Partially blocked commercial and emergency traffic





**HUMAN ACTIVITIES, ESPECIALLY THOSE RELATED TO WIDESPREAD URBANIZATION THAT HAS AFFECTED LARGE PART OF FORMERLY AGRICULTURAL AREAS .**



- increasing of the impermeable surfaces;
- strong reduction of the secondary drainage;
- urban sewerage underestimated relating to the increasing of urban areas;
- less general attention to the issue of water drainage



This has led to frequent flooding (even three or four times a year) of areas inhabited by long time, which, until few years ago, had never suffered the effects of these phenomena.



# POST EVENT ACTIVITY:

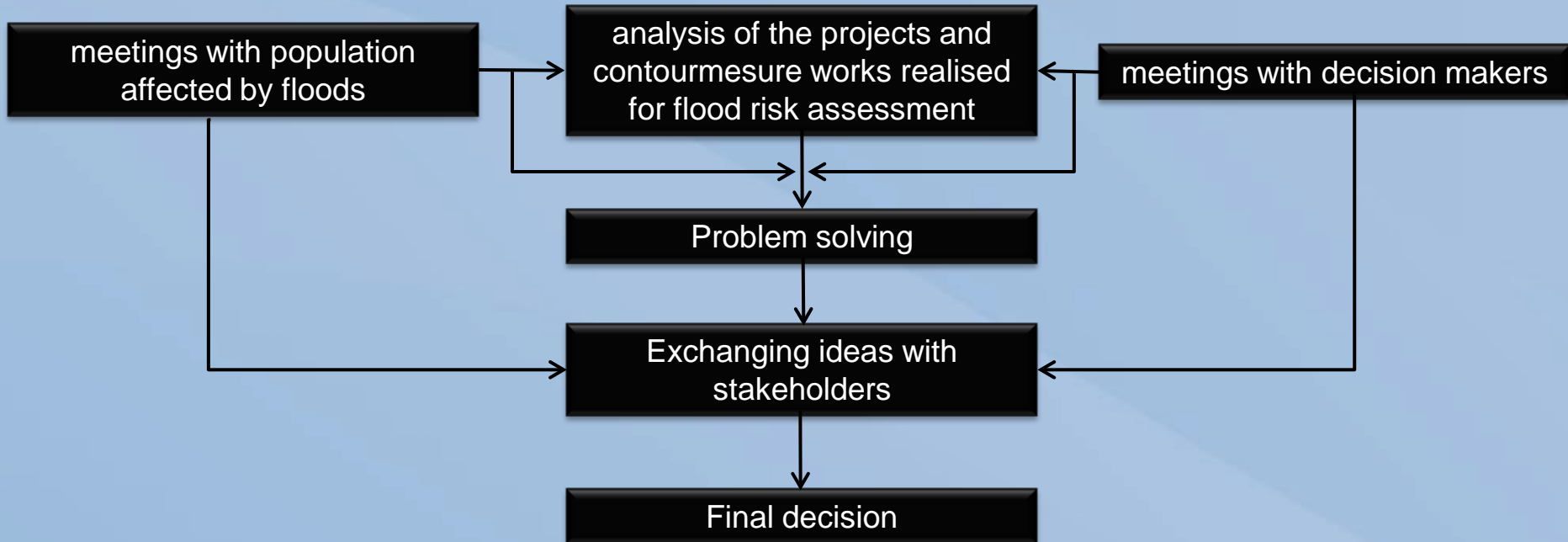


The commissioner activity was especially focused on reduce the inconvenience resulting from exceptional heavy rainfall, and in particular:

- General overview of all the hydraulic infrastructures projected, in study or under approval by appropriate offices;
- Classify the projects on the basis of importance and possibility to be achieved;
- Immediate action to promote ditches maintenance;
- Involvement of all the decision makers that operate on the area in order to reach common and shared objectives.



The commissioner priority was to involve those stakeholders, that normally do not cooperate together, in every steps of the decision making following the scheme:



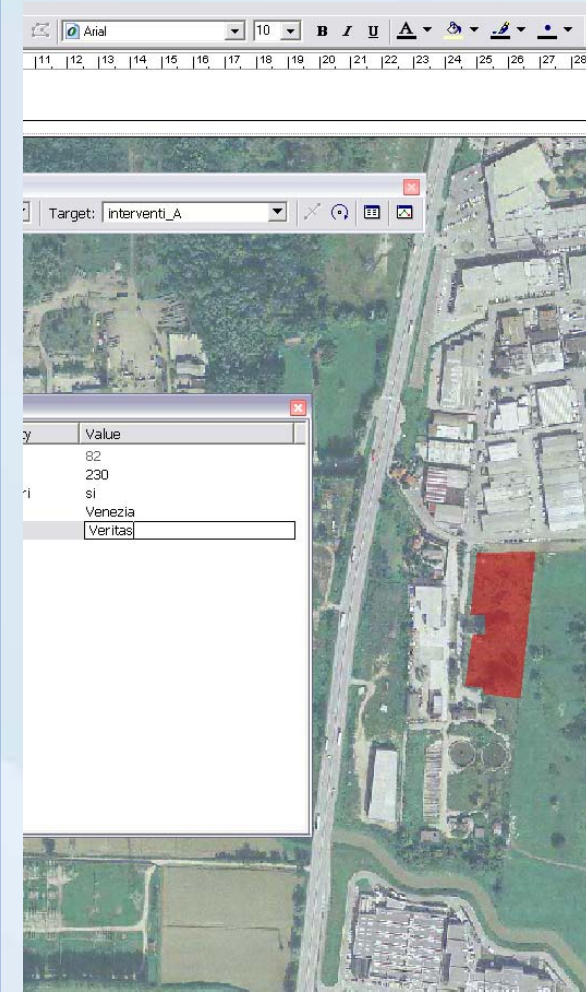
## GIS and WEBGIS:

Constitution of a Geographic Information System in order to allow the localization, visualization and analysis of the interventions aimed at flood risk mitigation

The information contained in the database will be used for future urban planning

The WebGIS will allow anyone to visualize, in addition to localization, even the status of implementation of each programmed interventions

<http://alluvione2007.provincia.venezia.it/int/webgis/map.phtml?config=intstato1>



Webgis - Commissario Allagamenti Veneto - Windows Internet Explorer

http://alluvione2007.provincia.venezia.it/int/webgis/map.phtml?config=intstato1

File Modifica Visualizza Preferiti Strumenti ?

Google Effettua la ricerca

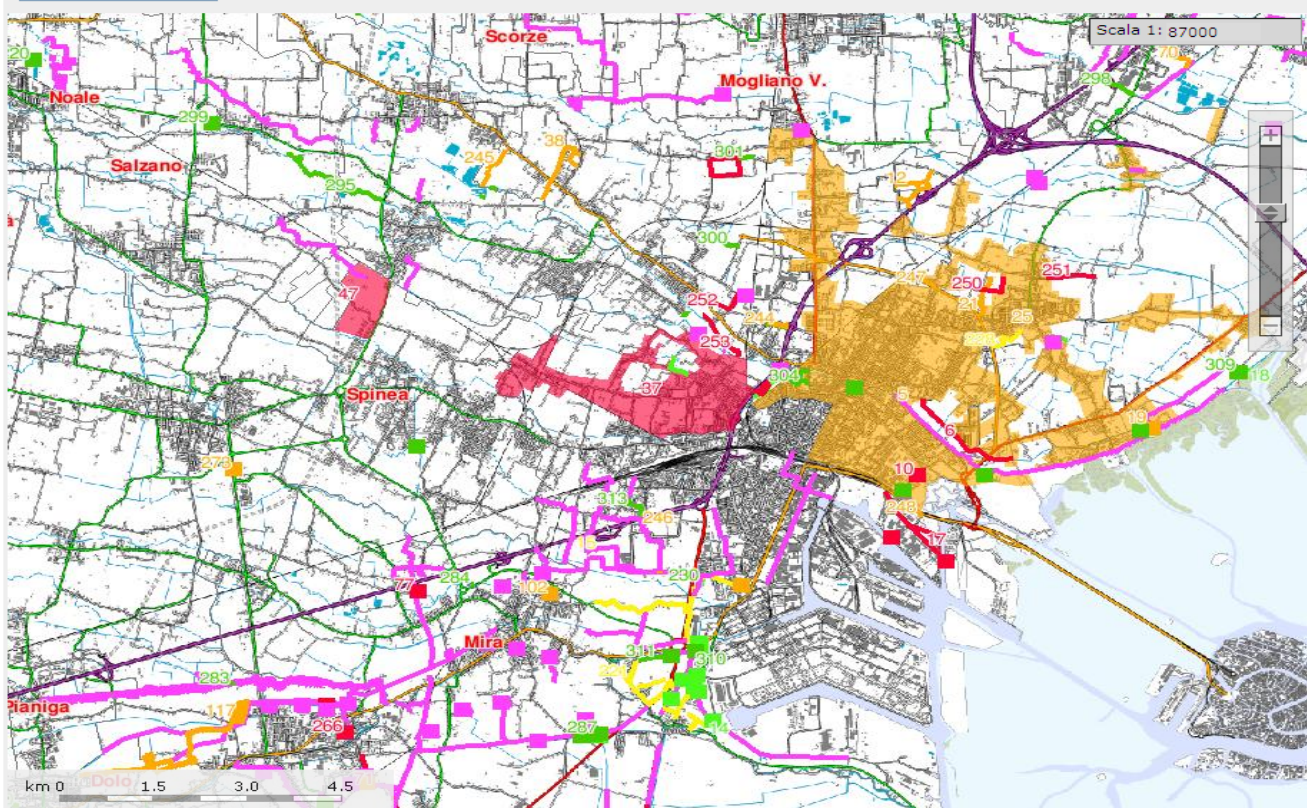
Webgis - Commissario Allagamenti Veneto

Commissario Delegato emergenza allagamenti Veneto del 26 settembre 2007

## Interventi - stato avanzamento

Elenco mappe  
Link sulla mappa attuale


Cerca per...



Scala 1: 87000

- Informazioni Tematiche
  - Interventi in gestione del Commissario
    - Realizzati
    - Parzialmente realizzati
    - Avviati
    - Parzialmente avviati
    - Prioritari
    - In programma
  - Aree allagate
- Limiti amministrativi
  - Confini comunali
  - Municipalità del Comune di Venezia
  - Veritas S.p.A.
  - Consorzi di bonifica
  - AATO Laguna di Venezia
  - Conterminazione lagunare
  - Bacino scolante
- Cartografia di base
  - Idrografia dei Consorzi di Bonifica
  - Carta base CTR (scala 50.000 - 100.000)

Strumenti



X: 1760404 Y: 5036153

PROVINCIA DI VENEZIA Sistema Informativo Geografico

p.mappe MAPSERVER W3C XHTML 1.0

Internet 100%

Commissario Delegato per l'emergenza concernente gli eccezionali eventi meteorologici del 26 settembre 2007 che hanno colpito parte del territorio della Regione Veneto

## Number of actions-interventions

	N°	Cost (million €)	Funding (million €)
Programmed before the event	321	367	224.6
In emergency	59	53.6	5
<b>TOTAL</b>	<b>380</b>		
Realised	131	22.3	22.3
Concretely started	33	57.5	54.8
Started	56	106	103.3
Priority	24	57.8	57.8



# URBAN TRANSFORMATION



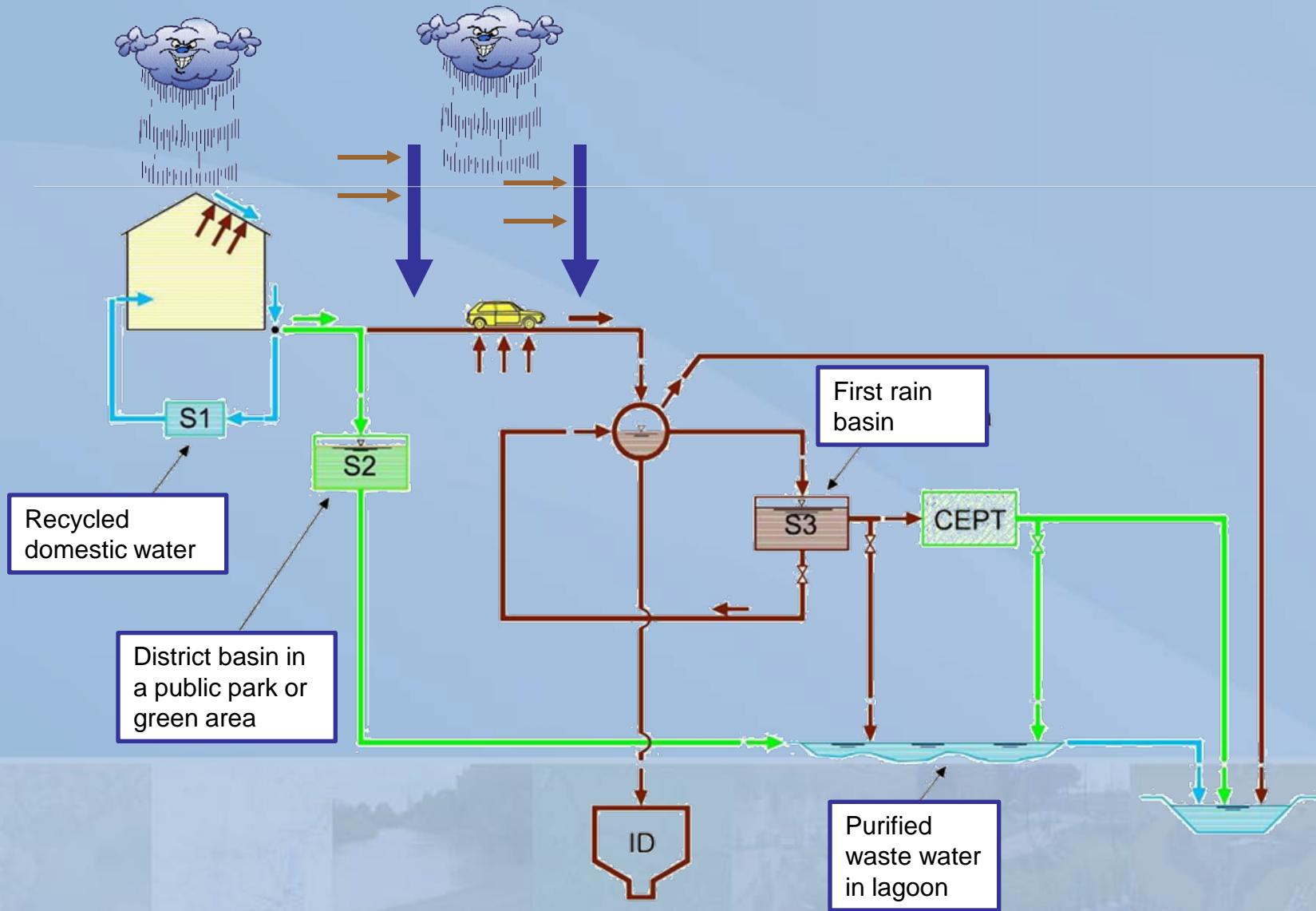


## CURRENT SITUATION OF URBAN AREAS: typical runoff composition

	Fraction occupied (P)	Inflow rate (K)	contribution (P x K)	Runoff volume (rain intensity 50 mm/hr (m <sup>3</sup> /ha h)
<b>Public parks</b>	0.10	0.20	0.02	<b>10</b>
Roads and parking	0.30	0.50–0.80	0.15–0.24	95
<b>Roofs</b>	0.30	0.90	<b>0.27</b>	<b>135</b>
Private areas	0.30	0.30–0.70	0.09–0.21	75
<b>TOTAL</b>	<b>1.00</b>		<b>0.53–0.74</b>	<b>315</b>



# IDEAL DIAGRAM FOR WATER DISPOSAL



Commissario Delegato per l'emergenza concernente gli eccezionali eventi meteorologici del 26 settembre 2007 che hanno colpito parte del territorio della Regione Veneto

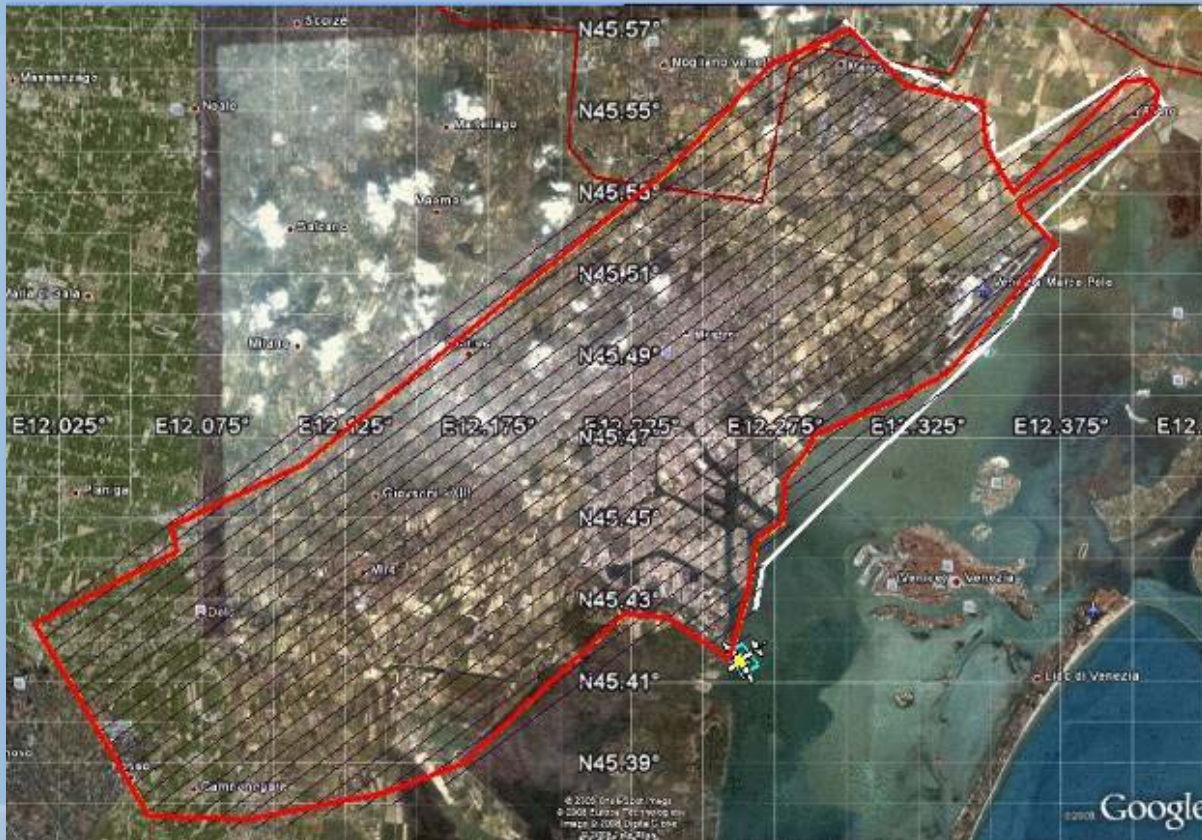
MAIN AIM: urban transformation within the principle to do not cause a worsening of the flood peak discharge



Within the activity planned by Deputy Commissioner three specific measures concerning this topic have been carried out :

- Ordinance n. 2 - Provisions regarding the hydraulic efficiency of buildings projected and approved by appropriate offices but not yet started
- Ordinance n. 3 – Provisions regarding new urban grants
- Ordinance n. 4 – Provisions regarding sewerage connections

## LASER SCANNER OF VENETIAN LANDFORM



*Surface scanned by LIDAR*

The High Resolution DEM, based on LIDAR data, has been made to support decision makers and to run hydraulic models to better evaluate the runoff of the area.

The scan performed on a flight altitude of about 900 m, has provided data with a density of 3.33 points per meter

The commissioner activity was also focused on make aware public administrators, private companies and citizens about the effects of meteorological extreme events in the venetian landforms

To do that 2 different Guidelines have been drawn up:

- *EVALUATION OF HYDRAULIC COMPATIBILITY*
- *FLOOD RISK ASSESSMENT AND MITIGATION OF THE EFFECTS*





## Urban area

- Manhole cover
- Inadequate draining system
- Bridges and admittances



Ditch cover = loss of drainage capacity



Ditch open = maintenance of drainage capacity

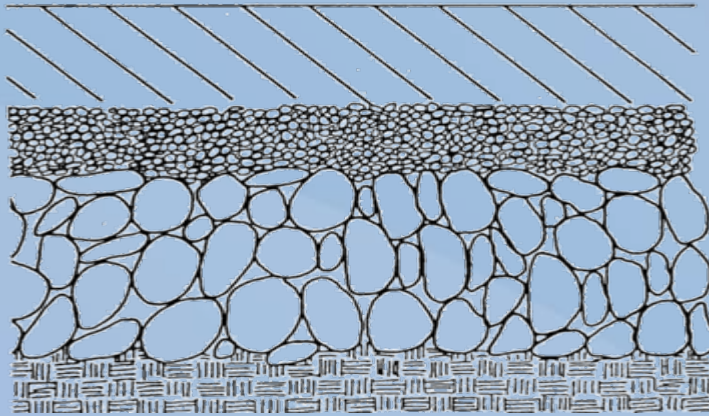


With pipes = section reduction –  
drainage problems



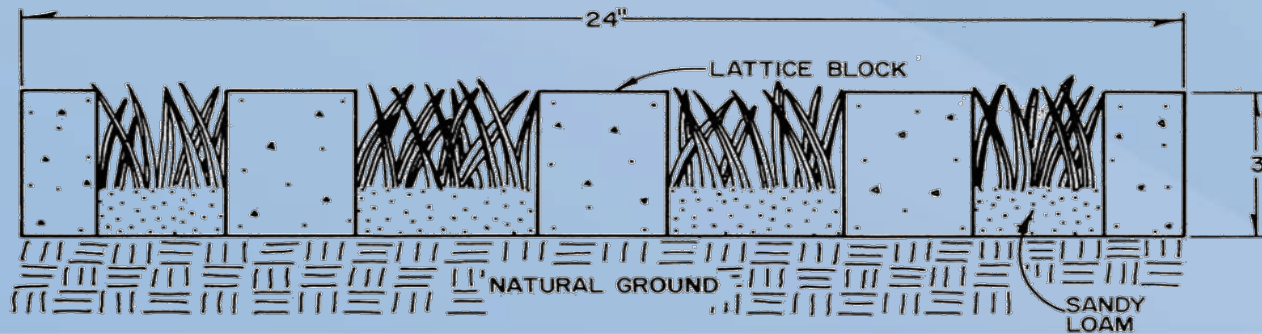
Net bridge = maintenance of  
hydraulic section





	Rain Volume 50 mm in 1hr (m <sup>3</sup> /ha h)
<b>Pubb. Parks.</b>	<b>10</b>
Road and parking	95
<b>Roofs</b>	<b>135</b>
<b>Private areas</b>	<b>75</b>
<b>TOTAL</b>	<b>315</b>

"sponging" road



HIGH PERMEABLE CAR PARK



Impermeable surface =  
increasing of peak discharge



Permeable surfaces = better  
drainage







Presidenza del Consiglio dei Ministri

Dipartimento della Protezione Civile

Commissario Delegato per l'Emergenza concernente gli eccezionali eventi meteorologici del 26 settembre 2007 che hanno colpito parte del territorio della Regione Veneto. OPCM n.3621 del 18/10/2007

# CONCLUSIONS



Commissario Delegato per l'emergenza concernente gli eccezionali eventi meteorologici del 26 settembre 2007 che hanno colpito parte del territorio della Regione Veneto

THE MOST IMPORTANT ISSUE IS TO ENSURE THE EFFECTIVENESS OF ACTIONS OF SUCH A LARGE NUMBER OF DIFFERENT SUBJECTS

TO DO THIS, SEVERAL CONDITIONS MUST BE ACHIEVED:



## FIRST CONDITION

each stakeholder has the same dignity and importance because each of them plays a key role in the system



## SECOND CONDITION

the different roles of the various components must be clear and recognized by everybody





## THIRD CONDITION

each component of the system has mutual knowledge and awareness of the previous two conditions



EXPERIENCES IN IDENTIFYING AND INVOLVING STAKEHOLDERS  
AND END-USERS IN THE FLOODRISK PLANNING

Sala Vivaldi, Centro Don Orione Artigianelli

VENICE - 13 of september 2010

# THANK YOU FOR ATTENTION

For more information:

<http://www.commissarioallagamenti.veneto.it/>

E-mail: [commissario.emeridro@regione.veneto.it](mailto:commissario.emeridro@regione.veneto.it)

**Eng. MARIANO CARRARO**  
Deputy Commissioner for the  
emergency concerning the 26<sup>th</sup>  
of September 2007 extreme  
meteorological event that  
affected part of the territory  
of Veneto Region



**Commissario Delegato per l'emergenza concernente gli eccezionali eventi meteorologici  
del 26 settembre 2007 che hanno colpito parte del territorio della Regione Veneto**