



ISPRA

Istituto Superiore per la Protezione
e la Ricerca Ambientale



CONSIGLIO PER LA RICERCA
E LA SPERIMENTAZIONE
IN AGRICOLTURA



DIPARTIMENTO DI INGEGNERIA
CIVILE EDILE E AMBIENTALE
SAPIENZA
UNIVERSITÀ DI ROMA

Convegno IL CONSUMO DI SUOLO: LO STATO, LE CAUSE E GLI IMPATTI

Impatto dello sprawl urbano sulle foreste

A. Barbati, Università della Tuscia, Viterbo

P. Corona, CRA-SEL Arezzo



- urban sprawl: un fenomeno percettibile e apparentemente inarrestabile...

Più lenta, ma comunque consistente, è l'espansione del bosco in aree abbandonate dall'agricoltura...





Contents lists available at SciVerse ScienceDirect

Urban Forestry & Urban Greening

journal homepage: www.elsevier.de/ufug

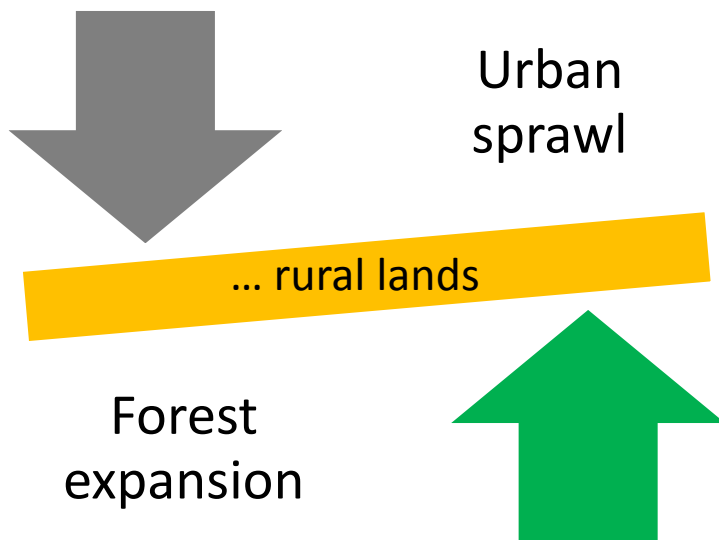


Natural forest expansion into suburban countryside: Gained ground for a green infrastructure?

Anna Barbati^{a,*}, Piermaria Corona^a, Luca Salvati^b, Lorenza Gasparella^a

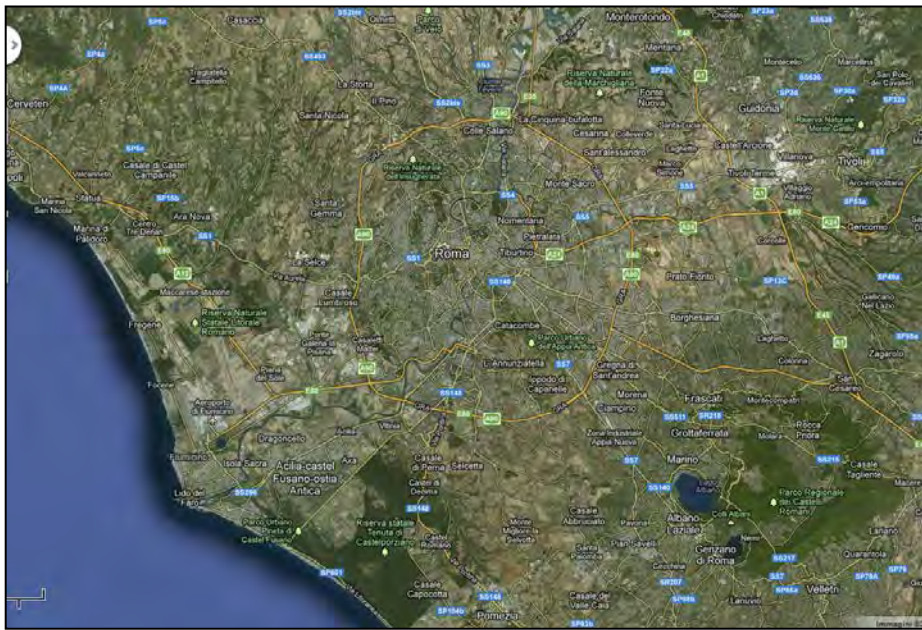
^a Department for Innovation in Biological, Agro-food and Forest systems (DIBAF), University of Tuscia, Via S. Camillo De Lellis, snc I-01100 Viterbo, Italy

^b Consiglio per la Ricerca e la sperimentazione in Agricoltura, via della Navicella 2-4, I-00184 Rome, Italy

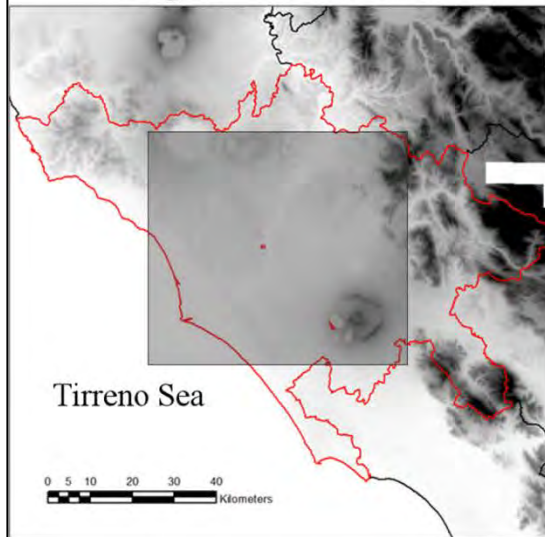


- land-use change drivers leading to forest expansion in the examined period (1974–2008)
- Morphological Spatial Pattern Analysis (MSPA) → trends in the landscape pattern of forest cover
- nature protection measures or other environmental factors do favour forest expansion in suburban rural lands?

Area di studio



Digital Elevation Model



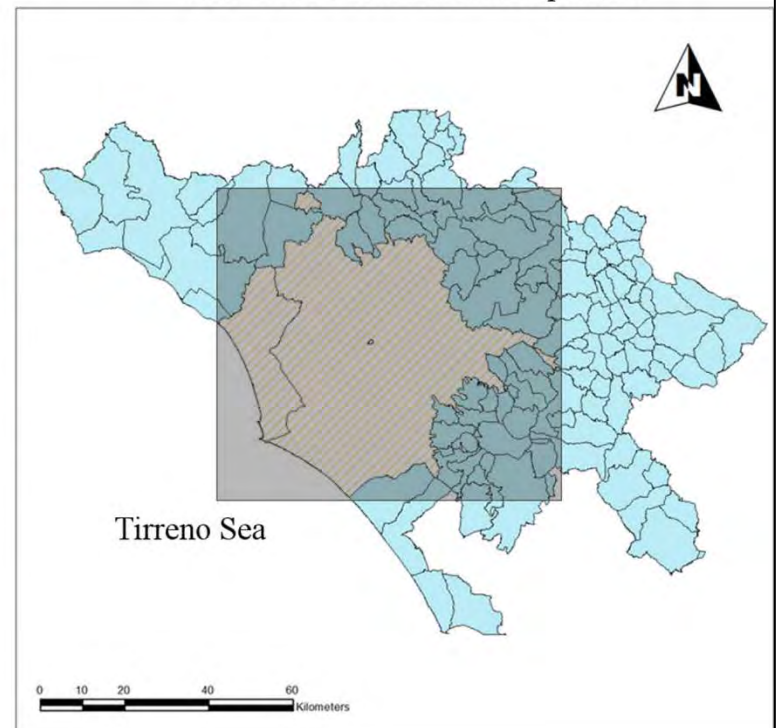
Legend

- Boundaries of Rome district
- Urban district
- Suburban district

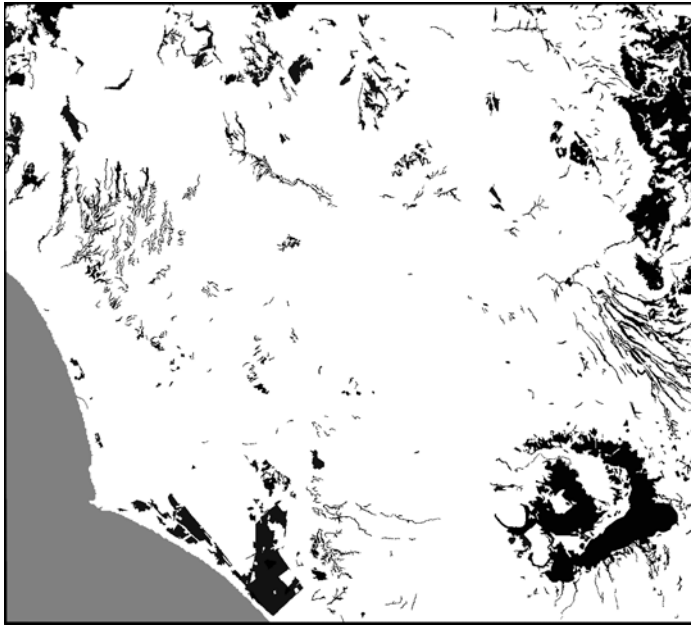
Digital Elevation Model



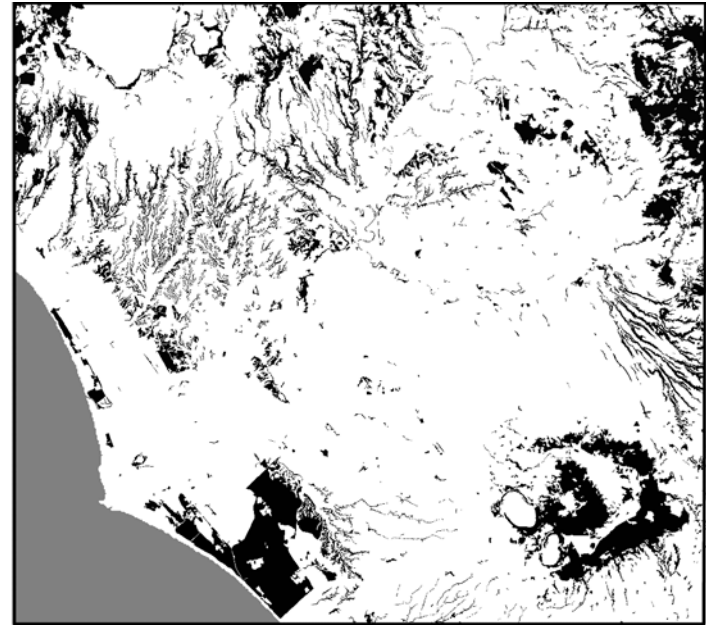
Urban and suburban municipalities



Forest expansion, evidente in 35 anni!

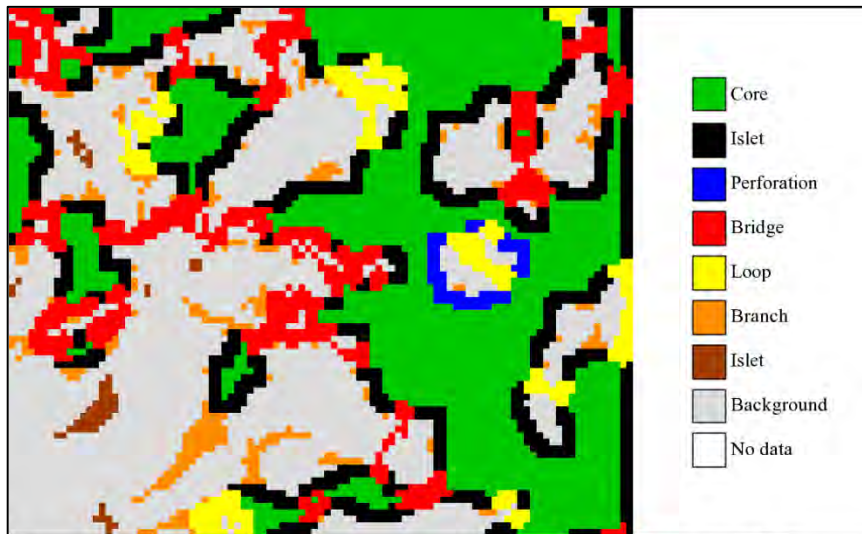


1974



2008

Morphological Spatial Pattern Analysis (MSPA)



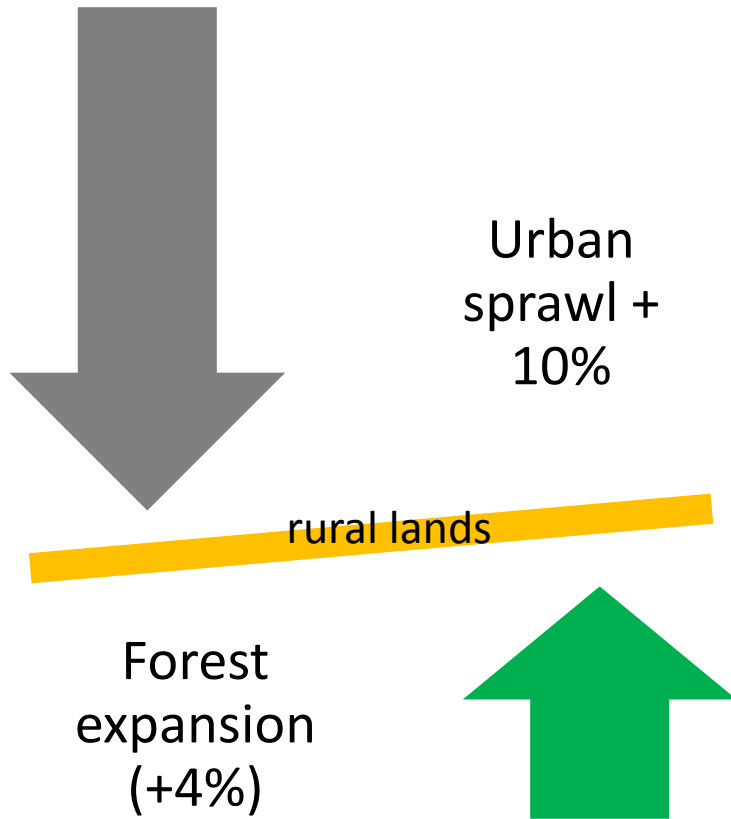
MSPA class	Classification rule	Ecological implications for habitat provision/species dispersal
Core	Forest pixels whose distance to non-forested areas > edge width	Core habitat areas, potentially suitable for specialist interior species
Edge	Set of forest pixels whose distance to the patch edge < edge width (outer boundary of a core area)	Habitat provision for edge dependant and/or invasive species
Perforation	Similar to edge but corresponding to the inner boundary of a core area	Introduces edge effects deeper into inner core forest
Bridge	Sets of contiguous forest pixels that connect at least two different core areas	Makes reachable a higher amount of habitat for those organisms that dwell in any of the two linked cores and that can effectively disperse through these corridors
Loop	Similar to bridges but connecting different parts of the same core area	Facilitates organism dispersal within the same core area
Branch	Sets of contiguous forest pixels that emanate from a forest area and that do not reach any other forest area at the other end	-
Islet	Isolated forest patches that are too small to contain core pixels	Limited number of species and dimension of populations supported, influencing gene flow and short- to long-term population fitness and evolutionary potential

Different MSPA structures can be used to identify elements that make up a green infrastructure and related underlying functional processes

GUIDOS software

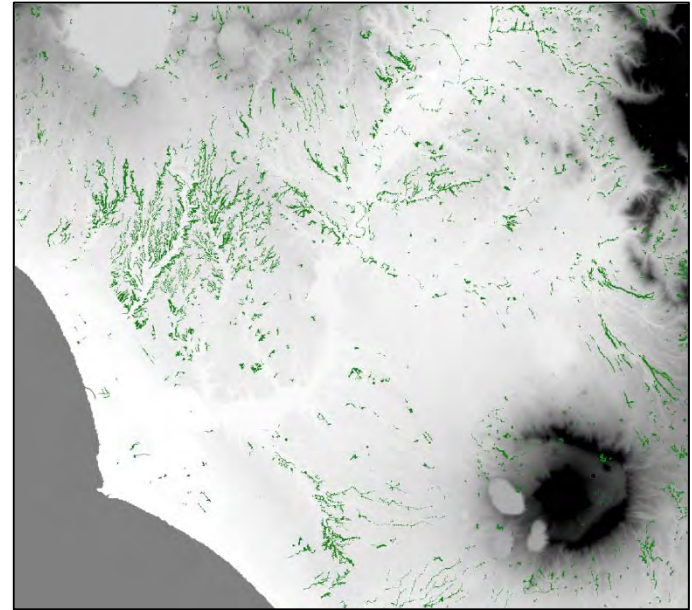
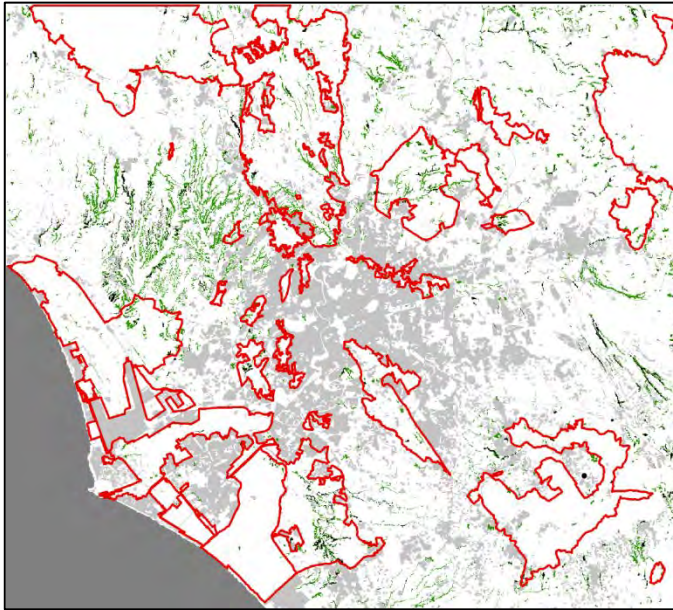
(<http://forest.jrc.ec.europa.eu/download/software/guidos>)

Key findings

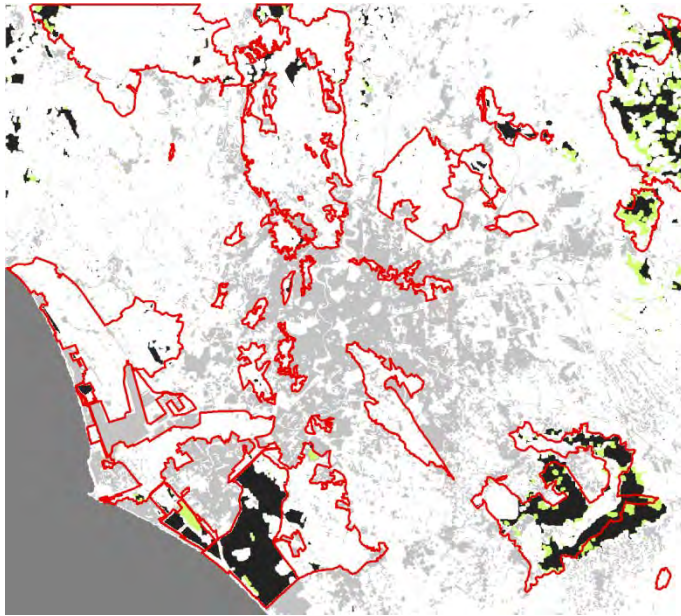
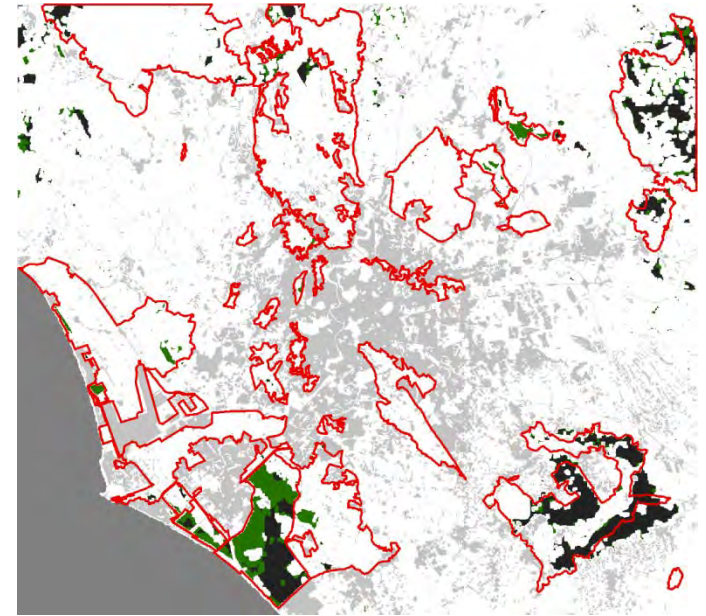


1. forest land uptake exceeds 4% of total study area, but clearly has a slower pace than the urban areas growth (10%)

2. forest gains → forest sprawl in the form of islets, that leap-frog over marginal rural lands along the stream network after farmland abandonment



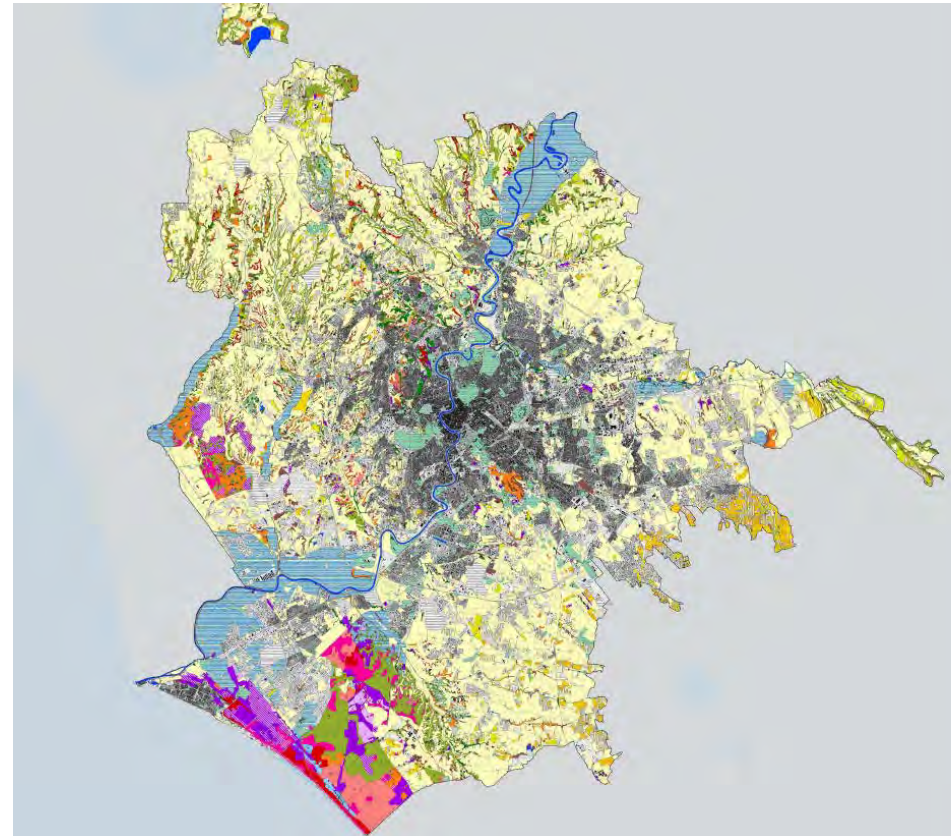
3. the network of protected areas nearby Rome has played a **key role for the conservation/expansion of core areas**

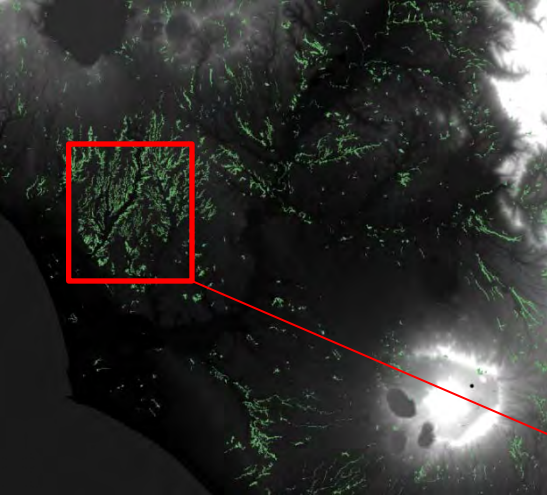


however, local loss of 1974 core areas stocks in a few protected areas seems to indicate **need of further law enforcement**

Per il futuro...

Può la Rete Ecologica del Comune essere uno strumento efficace per la conservazione/espansione delle superfici forestali?





Reticolo idrografico+islet+aree agricole limitrofe= Componenti primarie

Azioni previste: **tutela e salvaguardia degli ecosistemi:**

- Esempio misure
- tutelare e ampliare le aree di vegetazione naturale
 - manutenzione o rinaturalizzazione dei corsi d'acqua e del relativo contesto

