



FP7-ENV-2007-CSA-1.2.3-01 Grant Agreement 219 337

ERA-ENVHEALTH

NEWSFLASH SPECIAL ISSUE



RECRUITMENT OF NEW PARTNERS: OBJECTIVES

**IN THIS SPECIAL
ISSUE FOR
POTENTIAL NEW
PARTNERS**

JUNE 2010

**WORKSHOP FOR
POTENTIAL NEW
PARTNERS IN THE
HAGUE – 15 SEPT.
2010**

**WHO TO INVOLVE AND
LEVEL OF
PARTICIPATION**

HOW TO BE INVOLVED

UPCOMING MEETINGS

CONTACTS

REMINDER:

NEXT DEADLINES

- **10 July 2010: deadline for sending the letters of intent for participation in the workshop**
- **26 July 2010: deadline for speakers at the potential new partners workshop**
- **15 September 2010: workshop for potential new partners in the Hague**

ERA-ENVHEALTH is a European project aimed at enhancing the coordination of European E&H research programmes. The objective of the project is to bring together European organisations that finance and plan research programmes in the field of E&H to **establish lasting cooperation and collaboration on several activities including knowledge exchange and other joint activities.**

The **recruitment of new partners and participants** is paramount to achieve the objectives of ERA-ENVHEALTH since it will facilitate:

- the identification of E&H research programmes not represented in the ERA-ENVHEALTH consortium;
- the identification of organisations that can be interested in becoming new fully fledged partners of the project;
- the fostering of an effective cooperation mechanism for the exchange of information among partners, potential partners and the larger stakeholder community, including researchers and NGOs;
- the provision of a cooperation platform or appropriate forum of discussion on E&H research priorities and programmes through the ERA-ENVHEALTH Consortium partners;
- the involvement of other strategic partners within partner countries to overcome knowledge gaps in policy implementation;
- the attenuation of institutional and financial barriers for international research implementation;
- the building of future network scenarios beyond the ERA-ENVHEALTH project life period.

The long-term objectives are also to:

- stimulate environment and health research

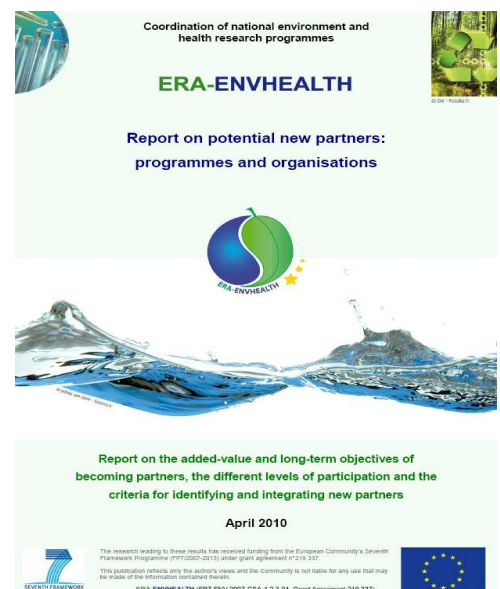
through an integrated approach in particular for neglected areas of research resulting from the ERA-ENVHEALTH Report concerning E&H programmes and projects within the Consortium, including emerging risks and “orphan” issues;

- contribute, through the exchange of research results and knowledge, to the development of coherent E&H research policies at EU and national levels;
- expand the Consortium network specially focusing on Southern European Countries and new Member States as established in the ERA-ENVHEALTH Description of Work.

More information about the objectives of the recruitment, the added-value and different levels of participation is available in the report on potential new partners, see www.era-envhealth.eu

(and for more details, please contact task 5.2 leader: luciana.sinisi@isprambiente.it)

WP5 Report on potential new partners



The research leading to these results has received funding from the European Community's Seventh Framework Programme (FP7/2007-2013) under grant agreement n° 219 337.

This publication reflects only the author's views and the Community is not liable for any use that may be made of the information contained therein.

WORKSHOP FOR POTENTIAL NEW PARTNERS AT ANNUAL ERA-ENVHEALTH GA MEETING IN THE HAGUE – 15 SEPT. 2010

As a potential new partner interested in taking part or contributing to the ERA-project, ERA-ENVHEALTH is pleased to invite you to participate in the 1st workshop for potential new partners, hosted by the Dutch Ministry of Environment, in the framework of our annual meeting, to be held next September 13-15, 2010 in The Hague, NL.

The aim of the [workshop for potential new partners](#) is to launch the first pilot study activities involving interested potential new partners. These activities are to be accomplished by a network of potential new partners relying on own capacities, with the support of ERA-ENVHEALTH experts and dissemination tools.

Three emerging issues were selected on the basis of knowledge on the future of the European E&H Action plan, themes that are interesting for the ERA-ENVHEALTH partners based on a first draft of the analysis of the database information, information on a UK document analysing indoor air quality research, the results of the Parma conference...

These themes are the main areas of expertise of the new actors to involve for the workshop and as part of a study that new potential partners and active contributors take part in:

1. HOUSING AND HEALTH: Evidence collection of health benefits from housing intervention to foster recommendations at Country level. The study will be coordinated by a new partner supported by the ERA-ENVHEALTH consortium and in particular task 3.2 leader.

2. CLIMATE CHANGE AND E&H ISSUES (focusing on mitigation and adaptation strategies): Research scope and needs with regards to E&H impacts of mitigation and adaptation measures in the urban environment. Identification of E&H priorities in sectorial mitigation and adaptation plan (e.g. environment, transport, energy, etc). The aim is to provide knowledge to address integrated E&H issues in policy measures. This work will facilitate the policy aspect of research needs in the field of climate change and final results will be integrated within the current ERA-ENVHEALTH consortium research activities to allow planning of research activities. This review will be coordinated by the ERA-ENVHEALTH task 3.2 leader.

3. ENDOCRINE DISRUPTORS AND HEALTH EFFECTS: review of existing data on major health effects (such as obesity and metabolic syndromes, infertility and miscarriages). The study

will be coordinated by a new partner supported by ERA-ENVHEALTH consortium and in particular task 3.2 leader.

We expect time and expertise to be provided by the potential new partners and the product we may expect to provide at the end of the activities are a publication. Webspace on the ERA-ENVHEALTH website will also be provided to the organisations participating in the studies and all the dissemination tools created by ERA-ENVHEALTH such as the Newsflash etc. will be at your disposal.

A presentation of the results should be given at the next annual ERA-ENVHEALTH GA meeting. These ACTIVITIES carried out by potential partners will benefit from the ERA-ENVHEALTH Consortium through:

- Use of ERA-ENVHEALTH dissemination tools for launching activities
- Results presentation in ERA-ENVHEALTH GA or workshop
- Final publications of the report to be approved by ERA-ENVHEALTH Consortium.

If you are interested in participating, you can register for this workshop by sending an email (before **July 10th 2010**) specifying your name and the position held within your institution to Adrienne Pittman, Project Coordinator (adrienne.pittman@afsset.fr) and Luciana Sinisi Task leader for the new partner activities: (luciana.sinisi@isprambiente.it).

Looking forward to your answer,

**DON'T HESITATE
TO CONTACT US**



For further information, visit our web site:
<http://www.era-envhealth.eu>

WHO TO INVOLVE AND LEVEL OF PARTICIPATION

With time and the implementation of both the EU strategy and action plan for environment and health, and the Budapest declaration and the CEHAPE, several countries may want to strengthen or launch research programmes in the field of E&H. These countries and organisations might consider helpful to benefit from the knowledge and experience gathered within ERA-ENVHEALTH.

The work of task 5.2 provided a recruitment strategy structure and tools supporting the involvement of organisations in future activities and aimed to answer two questions: **Who to involve**

and How to do it? The main outputs of the work supporting the proposed communication and recruitment strategy include:

- developing several activity scenarios according to different targets and cooperation with different Consortium bodies (see the workshop description)
- establishing transparent criteria with regards to requirements and mutual benefits from joining the network for different categories (see figure);
- selecting a list of potential new partners based on certain criteria such as: 1) National authority in the field of E&H research, 2) Attitude towards European research and network task achievements, 3) Geographical location ...

According to ERA-ENVHEALTH DOW priorities, the recruitment of institutions from Southern European countries and New Member States will be privileged, however all other participants are of course welcome.

New potential partners or contributors of countries which are already present in the Consortium should exchange information in the first place with their corresponding country representatives of the Consortium. Recruitment of new participants from other countries is to go through the task leader (Luciana Sinisi, ISPRA) and should be facilitated by the EAC members and other network contacts.

Initially the focus will be on **active/potential contributors** that are both **major research institutions and potential fully fledged**

partners (i.e. manage a research programme) trying to keep a balance among the different categories.

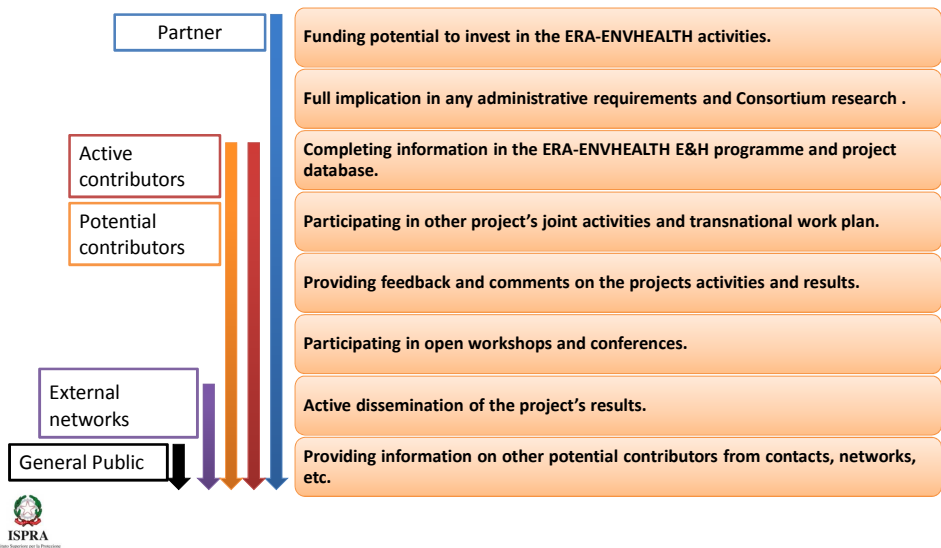
The figure illustrates the different levels of participation in the ERA-ENVHEALTH activities. Each level of participation considered is defined by a number of criteria in terms of eligibility, expectations in terms of investment and feedback from the Consortium in order to keep the ERA-ENVHEALTH project functional and manageable. The extension of the network is probably of uttermost importance for the success of ERA-ENVHEALTH.



Who CAN do what OUTSIDE Consortium



Criteria to contribute to the ERA-ENVHEALTH project :



A number of criteria are to be used for identifying and involving potential new partners, the main ones being: owner / manager of E&H research programmes, willingness to participate in joint activities and similar strategic priorities as the ERA-ENVHEALTH consortium partners.

The mechanisms for the involvement of interested organisations and the activities in which they may become involved will be discussed during the **workshop for potential new partners, on 15 September 2010 in The Hague, The Netherlands.**

Interested organisations are invited to contact Task 5.2 leader: Luciana SINISI: luciana.sinisi@isprambiente.it or the project coordinator Adrienne PITTMAN: adrienne.pittman@afsset.fr

HOW TO BE INVOLVED

A certain number of institutions and contacts have been identified by the ERA-ENVHEALTH partners and will be invited to participate, in particular at the September workshop, through an email request and through this newsflash special issue for potential new partners.

If you are an interested organisation that has not been identified formally, please contact us to express your interest.

If you are particularly interested in participating in the potential new partner activities and workshop (see page 2 for the description), please send us as soon as possible a letter of interest (email).

Three interested new potential partners or active contributors will be invited to speak at the workshop. They should be active institutions in the area of expertise in the 3 selected issues for the activities.

How to join the ERA-ENVHEALTH Project

- You would like to participate in the workshop or are interested in becoming a partner of the project

Interested organisations are invited to contact Task 5.2 leader: **Luciana SINISI**: luciana.sinisi@isprambiente.it or the project coordinator **Adrienne PITTMAN**: adrienne.pittman@afsset.fr

- You are interested in becoming a member of the External Interest Group (EIG)

If you are interested in only joining the External interest group to be kept informed of the progress of the project and maybe be called upon to participate in certain meetings and discussions, please contact the leaders of WP5 "Dissemination and Communication":

Bart VERHAGEN: Bart.Verhagen@health.fgov.be and

Mohssine EL KAHLOUN: mohssine.elkahloun@belspo.be

UPCOMING MEETINGS

UPCOMING MEETINGS

18 AUGUST 2010: TASK 5.2 MEETING IN BRUSSELS TO FINALISE THE WORKSHOP ORGANISATION

13-15 SEPTEMBER 2010: GA MEETING IN THE NETHERLANDS INCLUDING WORK SESSIONS

15 SEPTEMBER 2010: WORKSHOP FOR POTENTIAL NEW PARTNERS, THE HAGUE, THE NETHERLANDS

Draft agenda for the GA meeting – 13-15 September 2010, in The Netherlands

On 13 to 15 of September, ERA-ENVHEALTH will hold its annual **General Assembly meeting**. This 2 work sessions are planned during this meeting, which will also be closed by a **workshop for Potential New Partners**. The draft agenda is as follows:

13 September 2010

- 10.00 to 12.00: dedicated to the financial issues. *Restricted attendance to the GA representatives.*
- 13.30 to 18.00: discussion on the strategic issues and session dedicated to the scientific progress of the project. *Attendance is open to all invited participants.*

14 September 2010

- 9.00 to 12.30: Work session 1 (task 2.1) on the identification of strategic and emerging issues in E&H research.
- 14.00 to 17.30: Work session 2 (task 4.2) on the design of the second call.

15 September 2010

- 9.00 to 12.30: Workshop for potential new partners.
- 12.30 to 13.00: Closure of the meeting.

CONTACTS

Coordinator of the project

Adrienne Pittman

ERA-ENVHEALTH project coordination
European and International Relations Unit
AFSSET Agence française de sécurité sanitaire de l'environnement et du travail
253 avenue du Général Leclerc
94701 Maisons-Alfort Cedex
FRANCE
adrienne.pittman@afsset.fr

Communication and dissemination

Mohssine El Kahloun

ERA-ENVHEALTH project communication
Federal Coordination Environment & Health
Services of the President
FPS Health, Food Chain Safety and Environment
Victor Horta Square 40, box 10
B-1060 Brussels
BELGIUM
mohssine.elkahloun@belspo.be