

# Askoll

I am electric

Askoll EVA

Corporate presentation

# Askoll Group Overview

## Milestones – A path of breakthrough innovation

**1978**

Askoll is born  
1st synchronous  
aquarium pump

**1986**

Start business  
in HA sector  
1st synchronous  
drain pump

**1997-1998**

Begin of business  
internationalization  
Askoll Brazil is founded in  
Sao Paolo

**2000**

Start business  
in HVAC  
industry  
1st synchronous  
circulation pump

**2008**

Askoll Group  
becomes a  
global player  
Acquisition of  
Emerson (EAME)

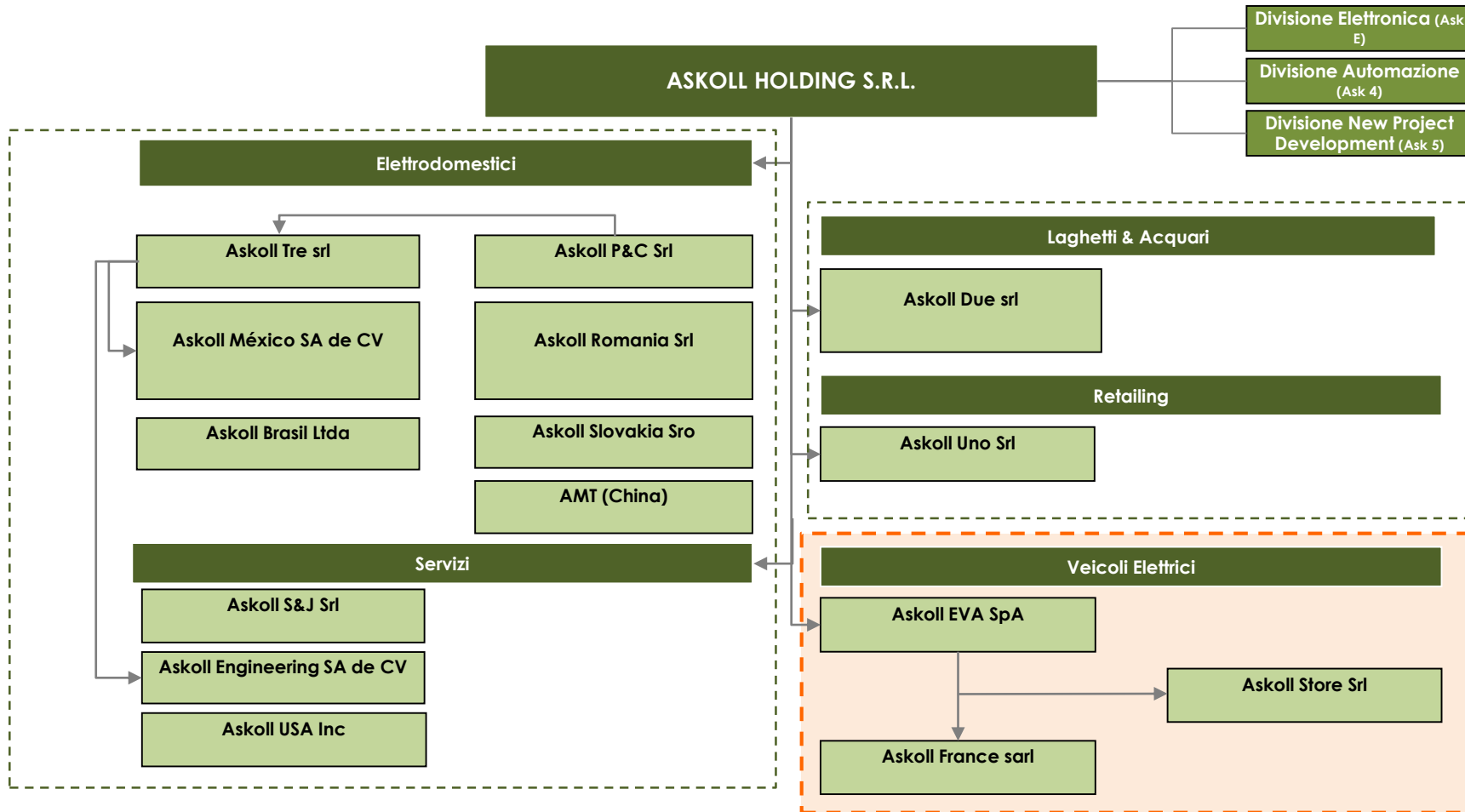
**2014**

Askoll enters  
in the electric  
mobility  
sector  
Askoll EVA is  
founded



# Askoll Group Overview

## Group structure & Key figures



**Total Group Turnover:**  
209 Mio euro

**Total Group Investments:**  
12 Mio euro

**Total Group Staff:**  
1.800 people

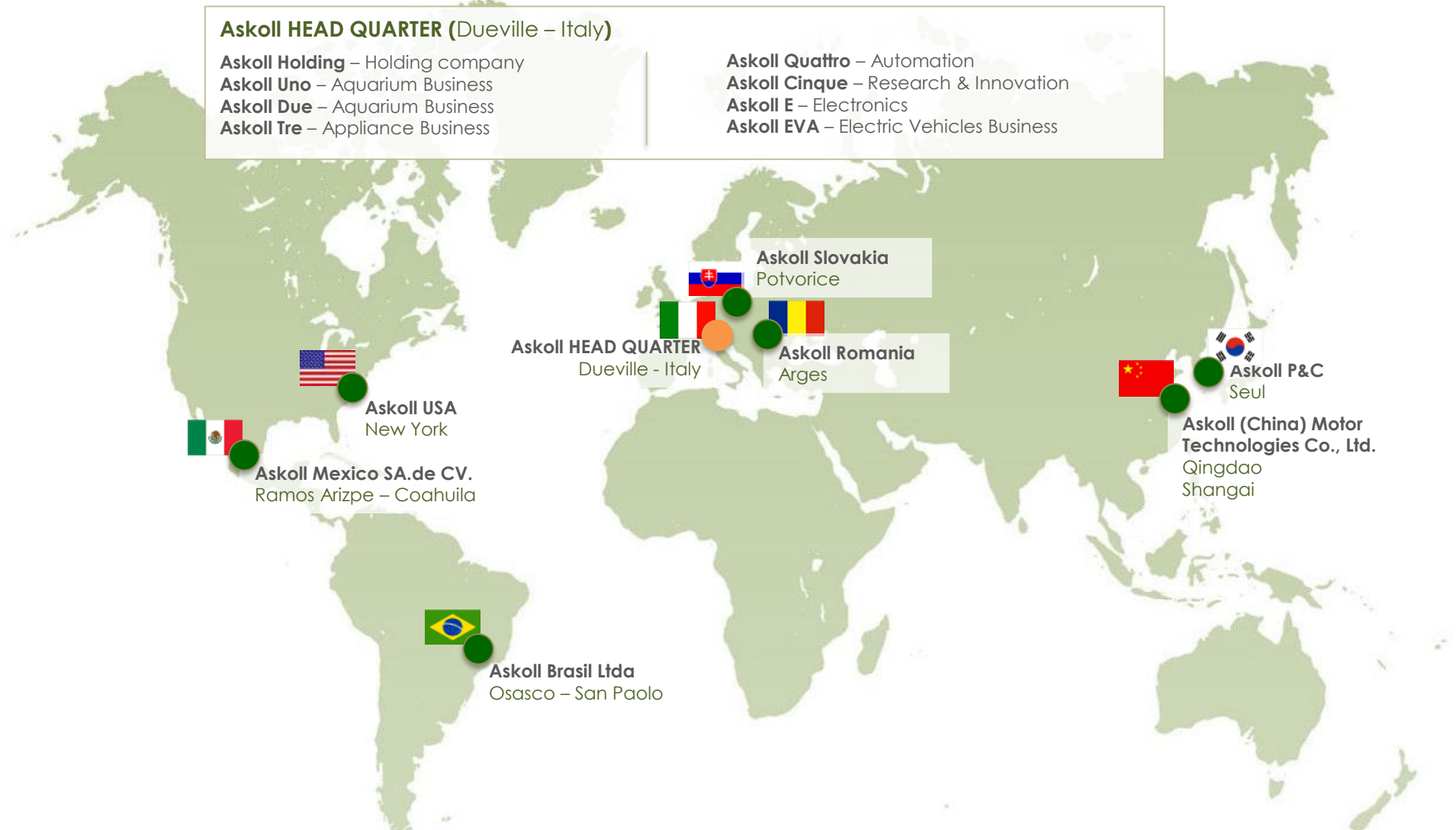
**# Business Areas:**  
3

**# Countries:**  
8

**# Companies:**  
11

# Askoll Group Overview

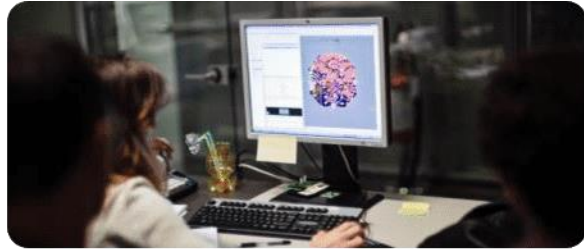
## A global industrial footprint





# Askoll Group Overview

## Strategic assets



### Number of patents

+800

### Innovation & development staff:

250 engineers & technicians

### Electronic controls

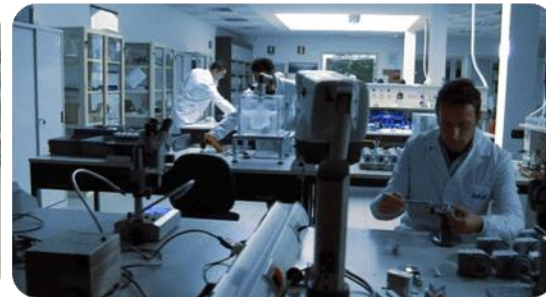
Internal development and manufacturing

### Industrial process

Internal development of all assembly lines and manufacturing facilities

### Customer base

More than 2.000 customers worldwide



# Askoll Group Overview

## Customer base

### Customer base

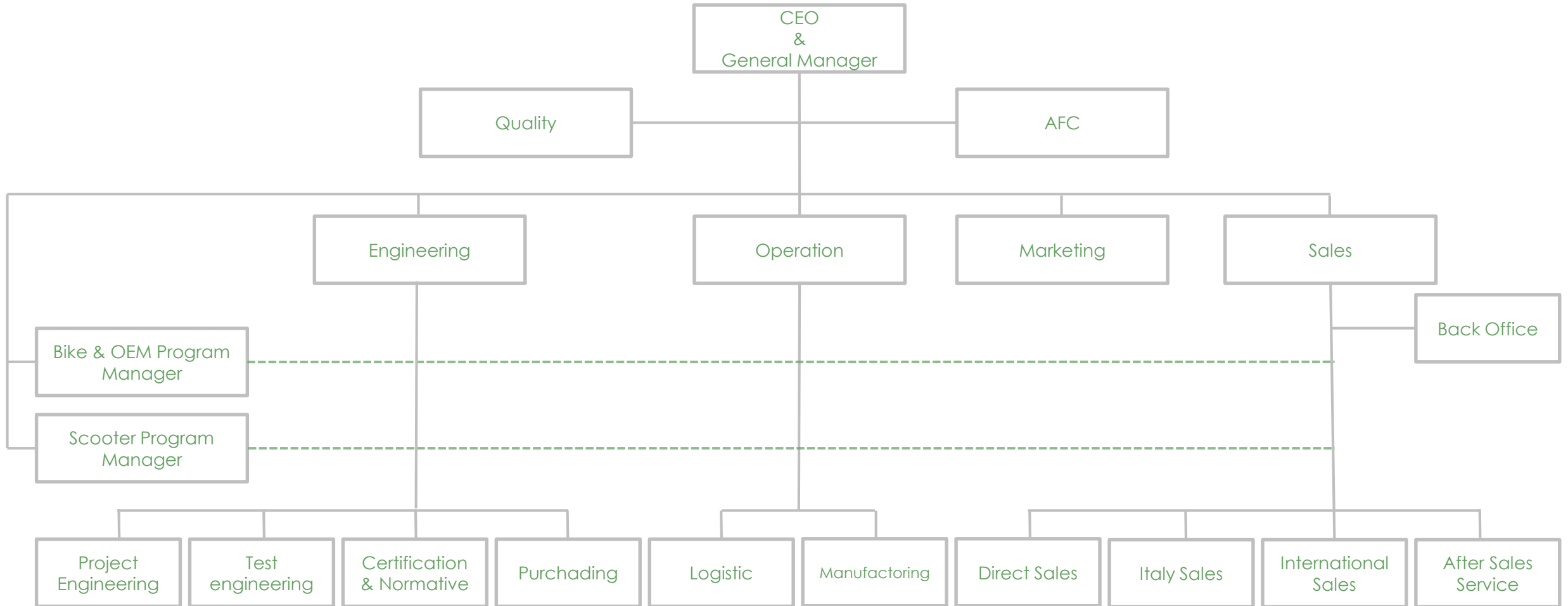
More than 2.000 B to B customers worldwide

Askoll Group is dealing with **multinational corporation in every Continent**



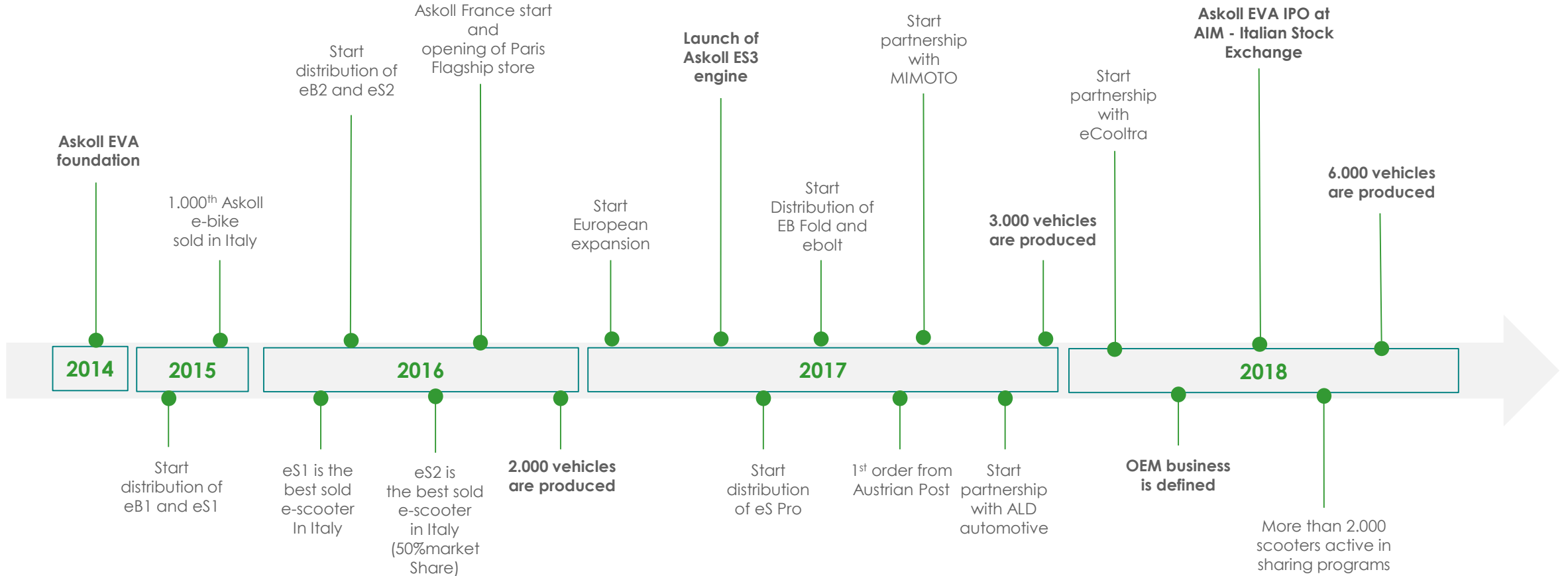
# Askoll EVA

## Organization chart



# Askoll EVA

## Milestones



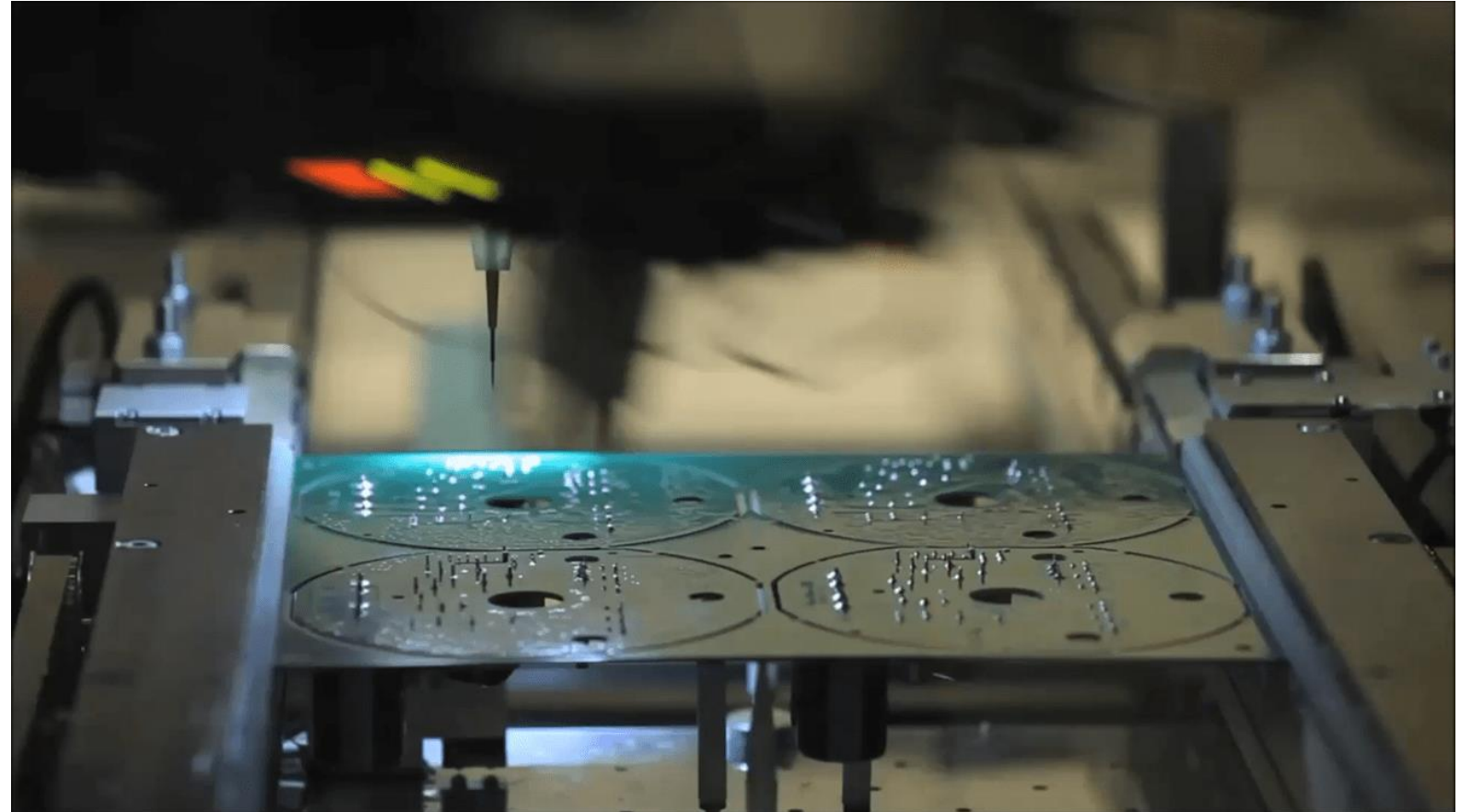


# Askoll EVA

Business partner

All core components are made by Askoll, in Italy

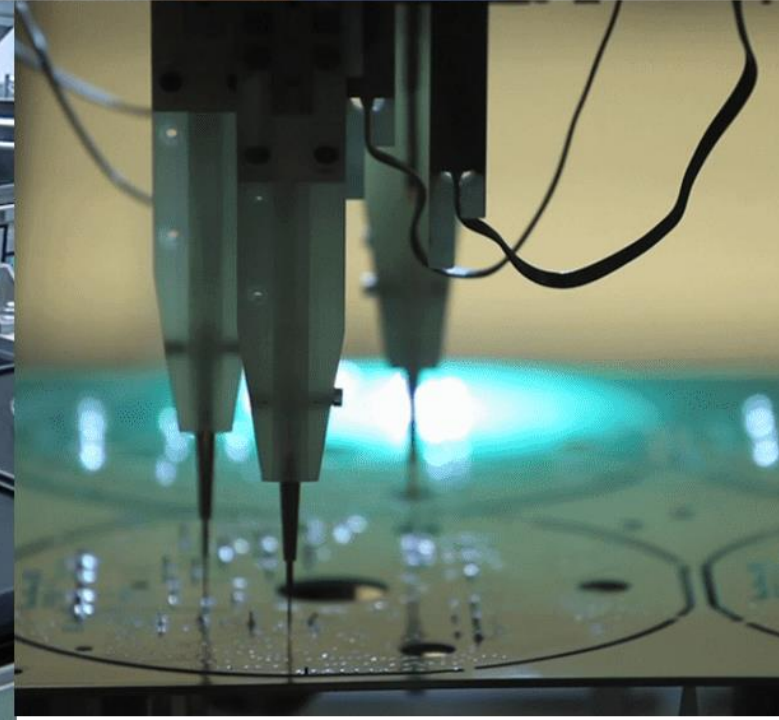
- Battery packs
- BMS
- Electronics
- Power train
- Highest quality
- Internal components development
- Taylor made solutions based on customer specification



# Askoll EVA

Business partner

- Production capacity e-scooters:  
**30.000** / year
- Production capacity e-bikes:  
**20.000** / year
- Reliable lead time
- More than **30%** of production is related to specific customizations

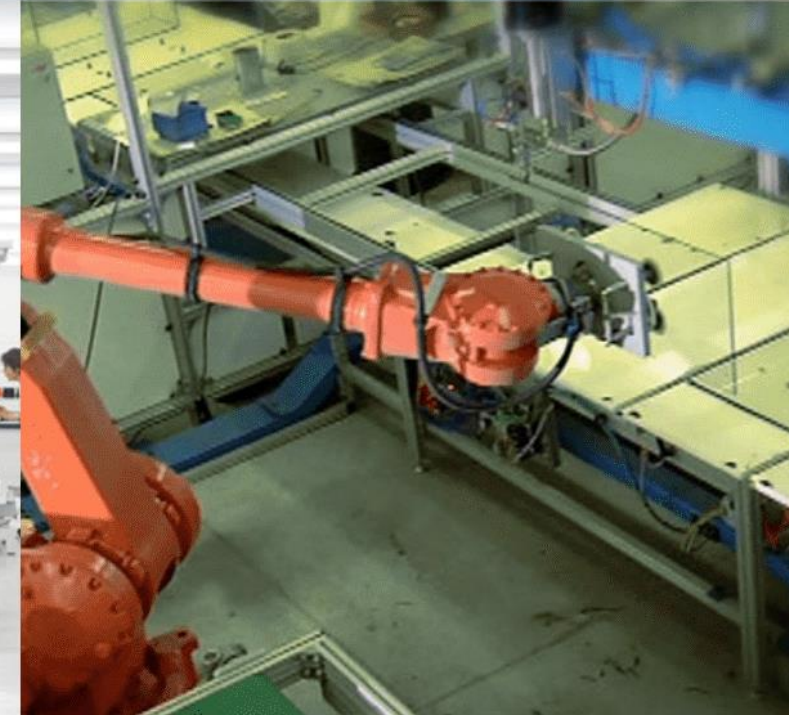




# Askoll EVA

Business partner

- Qualify supplier and certificate
- Stock and storage of raw materials and product integrated in the production plant
- Direct connection with the professional customers for deliveries, assistance and quality control
- Time to deliver spare parts with highest service level



# Askoll EVA Distribution Network

Askoll EVA distributes its solutions in

**19 Countries** through

**253** dealers and service network and  
18 independent Distributors / Importers

**3 Askoll Store** in Vicenza,  
Milan and Paris

**2** main branch: **Askoll Italy &  
Askoll France**

**Askoll**  
I am electric





# Askoll EVA

## Product portfolio

### Electrical Vehicles



Bike (Pedelec)

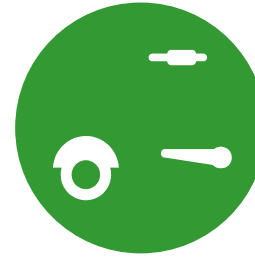
- Unisex, Man, Trekking, City, Folding, Kids, Kargo
- Private & professional range
- Sharing solutions
- Accessories



Scooter

- Vehicles type L1 / L3
- Private & professional range
- Sharing solutions
- Fleet solutions
- Accessories

### OEM Solutions



Off Field

- Battery
- Synchronous electric motor
- Gateway
- BMS
- ECU
- Power unit
- Electronic board
- Display



2 Wheels

- Battery
- Hub motor
- Bottom bracket motor
- Electronic board
- Display

# Full electric solutions for urban sustainable mobility:

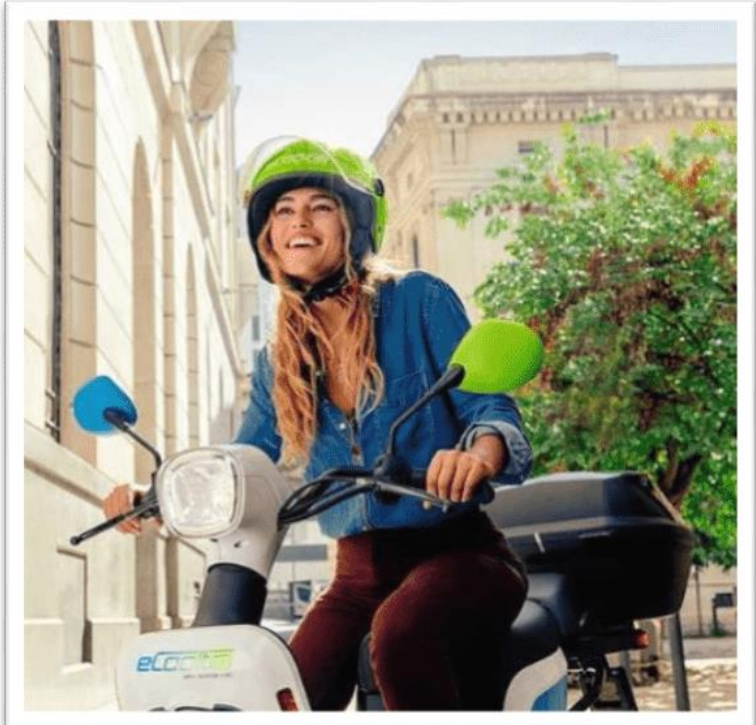
Individual



Professional



Sharing



# Mimoto

Reference | **Sharing**



## Customer requirements

Find a strong vehicle, fitting for all people and able to move safer and faster in urban traffic. Easy to drive and parking.

## Solution

eS2 Sharing «Mimoto»

- Power 2200 W
- Battery: 2100 Wh
- Dedicated electronic interface with remote control
- Yellow exclusive «Mimoto»



## Mimoto

Is the first electric scooter sharing service free floating made in Italy.

Mimoto is active in Milan and Turin with a fleet of 450 vehicles, all made by Askoll, with a future extension plans.

# eCOOLTRA

Reference | **Sharing**



## Customer requirements

Increase reliability fleet and reducing TCO. Work with a producer partner able to developed and made by technical, innovative and advanced specifications

## Solution

eS2 Sharing «eCOOLTRA»

- Power 2200 W
- Battery: 2800 Wh
- Double sit
- Advanced electronic for a complete remote control
- White

**eCOOLTRA**  
APP ▶ SCOOTER ▶ GO



## eCooltra

eCooltra is the leader in scooter sharing in Europe with a fleet of more than 3,000 electric scooters with a presence in 6 cities: Barcelona, Madrid, Valencia, Lisbon, Rome and Milan.

Fleet is composed by 2.400 Askoll vehicles with extension plan for the future



**Askoll**  
I am electric

Bike



# Askoll EVA

## eB Sharing - Overall features

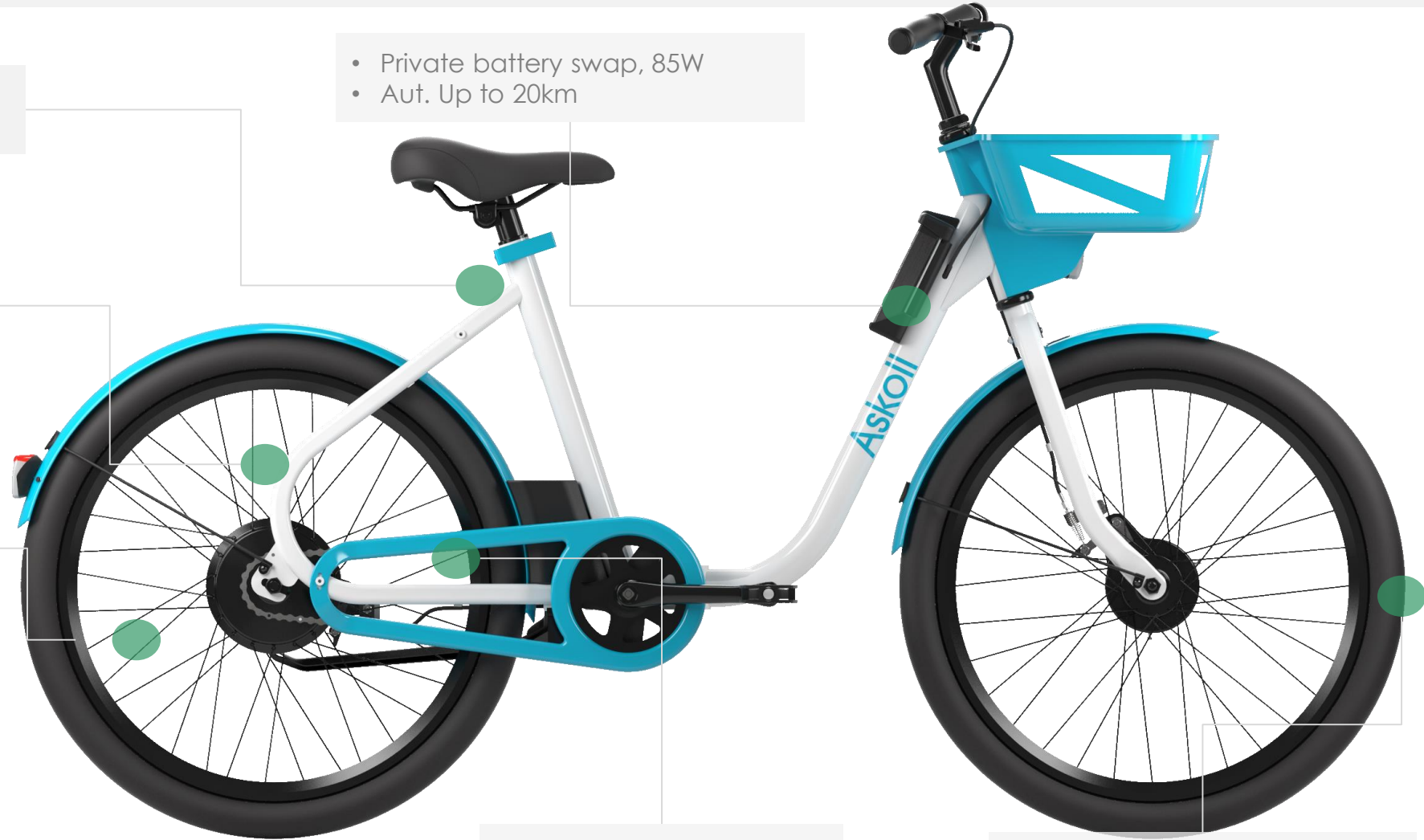
Sharing

- Easy and fast adjustable sitting

- Private battery swap, 85W
- Aut. Up to 20km

- Steel frame
- Customisable brand and colours

- Askoll motor 150W / 16Nm
- Speed max 20 Km/h



- Telemetry on board
- Central blocking system

- No drilling tires
- 24''

# 100%

MADE IN ITALY



All Askoll vehicles born **100%** electric

**All technical and core component** (battery, control unit, power train and electrical engine) are made by Askoll

**We are our first customer:** all automations needed to produce and testing the vehicles are designed and produced by Askoll Group

**We make smart mobility solutions, in Italy**

# Askoll

I am electric

Andrea Pasqualotto

Direct Account Manager

Mobile: +39 388 7207432

Mail: [andrea.pasqualotto@askoll.com](mailto:andrea.pasqualotto@askoll.com)