



Food and Agriculture Organization
of the United Nations

Il ruolo delle **foreste urbane** nella salute delle nostre città

Simone Borelli

Forestry Officer, Forestry Division





La salute è
uno stato di **completo**
benessere fisico,
mentale e sociale e non
la semplice
assenza **di malattia**

OMS, 1948







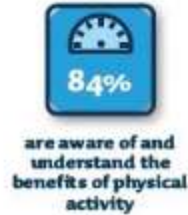
URBAN PARKS BENEFITS

**URBAN PARKS HELP TO IMPROVE
HUMAN HEALTH AND WELLBEING
WHILE STRENGTHENING SOCIAL
COHESION**



World Urban Parks
worldurbanparks.org

Green Prescription WORKS



*The above relates to Sport Southland's results from the 2018 GRX Patient Survey

"You have inspired me to achieve my goals and to increase my activity and I'm really thankful for your support"

"You don't realise just how much you have helped me. You have made me feel like there is someone behind me, supporting me, and I am very grateful for your help"

"This (Green Prescription) has been the wake-up call I needed and has been really helpful. It's amazing what a phone call can do"

"After you discussed suitable activity options with me it was like a light bulb moment"

To refer yourself, or someone else today Contact:
Green Prescription Team
P: 0800 228 483 W: www.sportsouthland.co.nz



The big picture



Greener natural environments

- Reduce Chronic Stress
- Increase Physical activity
- Strengthen Communities
- Sequester carbon
- Improve air quality
- Reduce floods
- Moderate temperatures



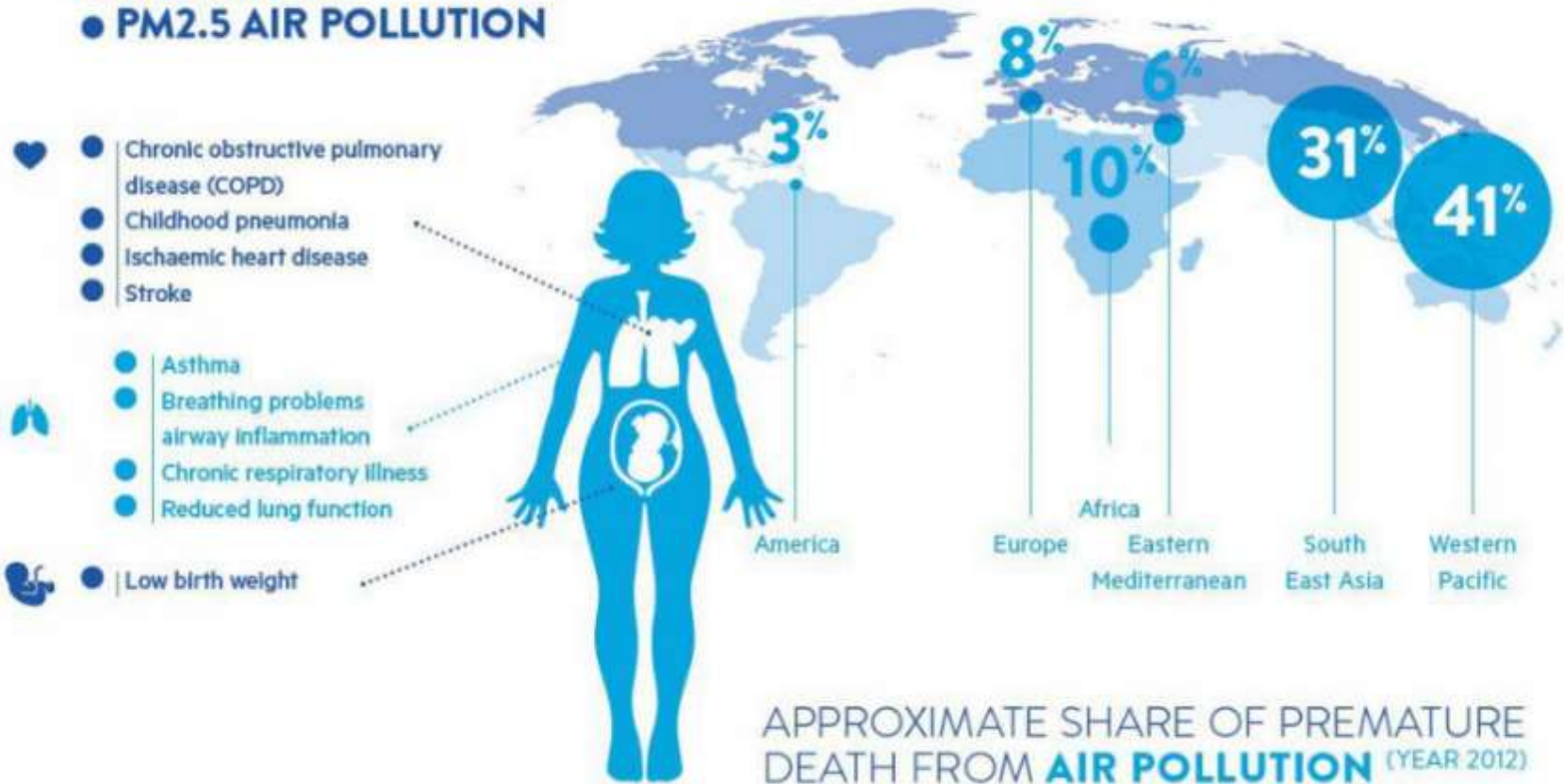




10 Miles

DISEASES DUE TO:

- OZONE (O₃)
- PM2.5 AIR POLLUTION



Un'Europa unita nell'inquinamento

Il dossier sulle polveri sottili e sull'ozono troposferico nei dati di Legambiente 2018 sulla qualità dell'aria

Concentrazione di PM10 nel 2015

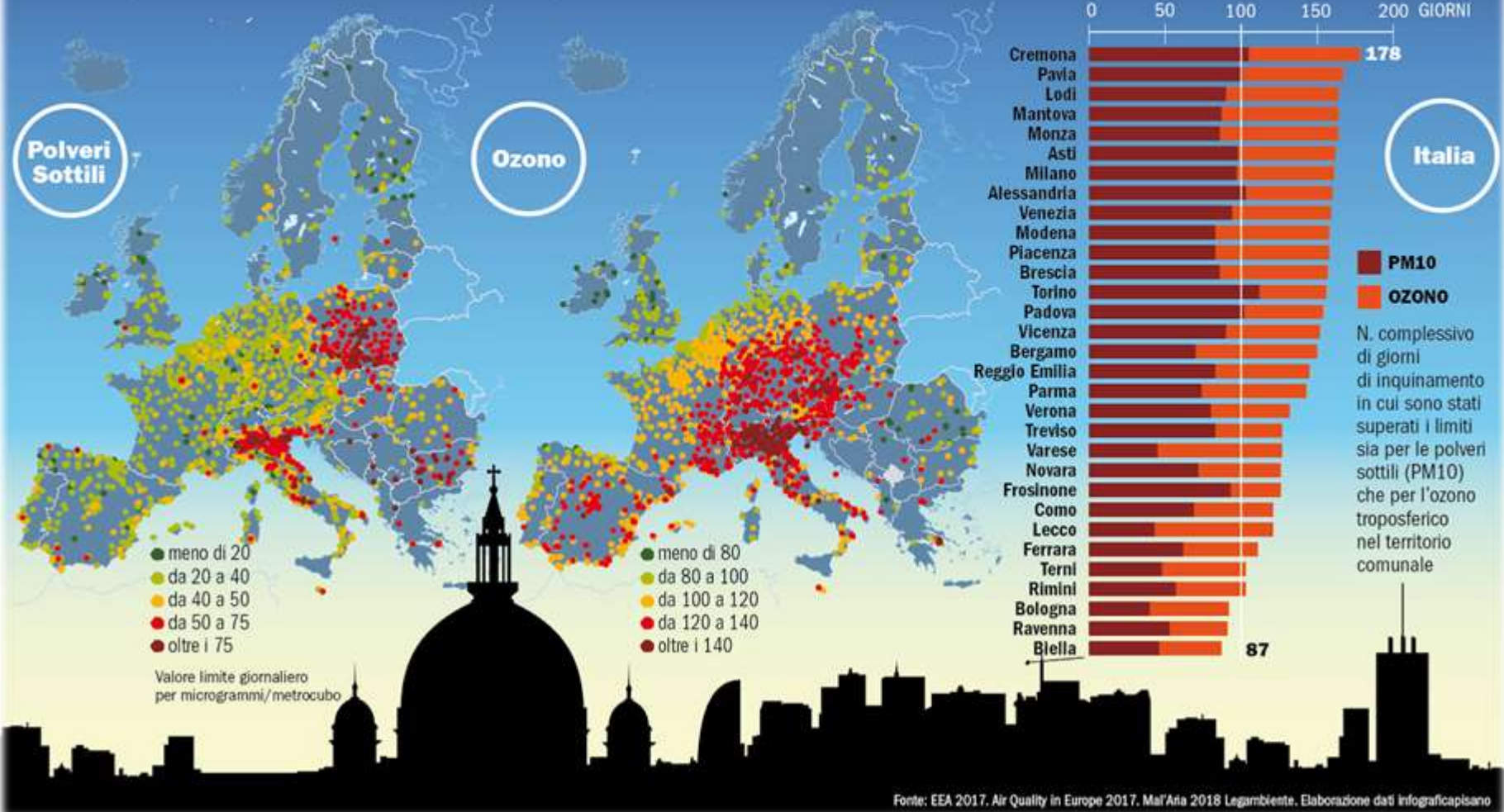
La mappa mostra il 90,4 % delle concentrazioni medie giornaliere di PM10. I punti in rosso e in rosso scuro indicano stazioni con concentrazioni superiori a questo valore limite giornaliero. Sono state incluse solo le stazioni con più del 75% di dati validi

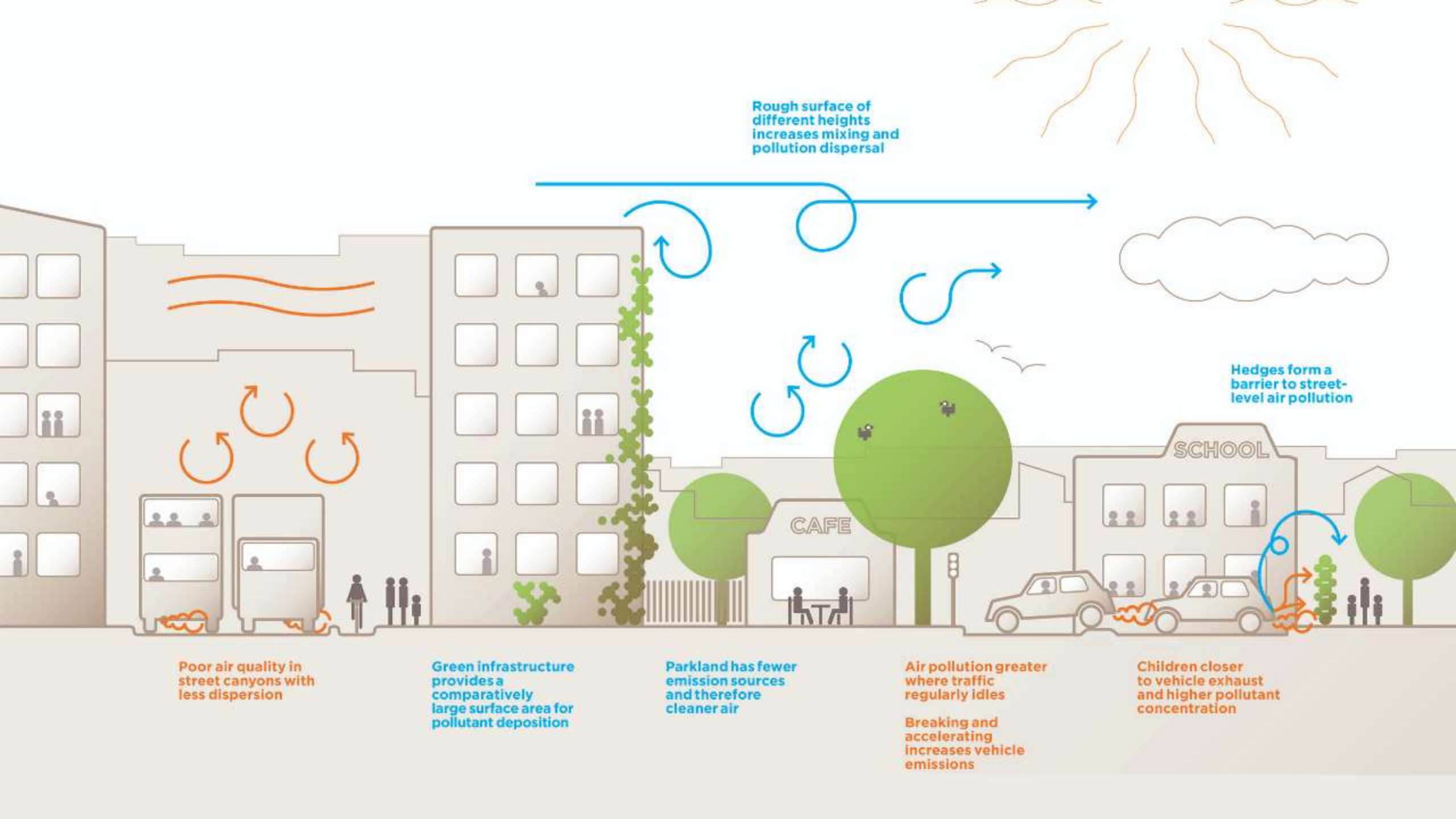
Concentrazione di Ozono nel 2015

La mappa mostra il 93,2 % della media giornaliera massima di 8 ore di Ozono. Nei punti in rosso e rosso scuro, la concentrazione giornaliera massima superiore alla soglia di 120. Solo le stazioni con più del 75% di dati validi sono state incluse nella mappa

Concentrazione di PM10 e Ozono in Italia

Le città italiane che nel 2017 hanno superato i limiti sono 31 e risultano fuori legge per entrambi gli inquinanti, 28 di queste superano i 100 giorni, e 16 superano addirittura i 150 giorni. Sono le città dell'area padana con l'aggiunta di Frosinone e Terni





Rough surface of different heights increases mixing and pollution dispersal

Hedges form a barrier to street-level air pollution

Poor air quality in street canyons with less dispersion

Green infrastructure provides a comparatively large surface area for pollutant deposition

Parkland has fewer emission sources and therefore cleaner air

Air pollution greater where traffic regularly idles

Breaking and accelerating increases vehicle emissions

Children closer to vehicle exhaust and higher pollutant concentration

TREES shade buildings reducing the need for air conditioning which reduces fossil fuel consumption

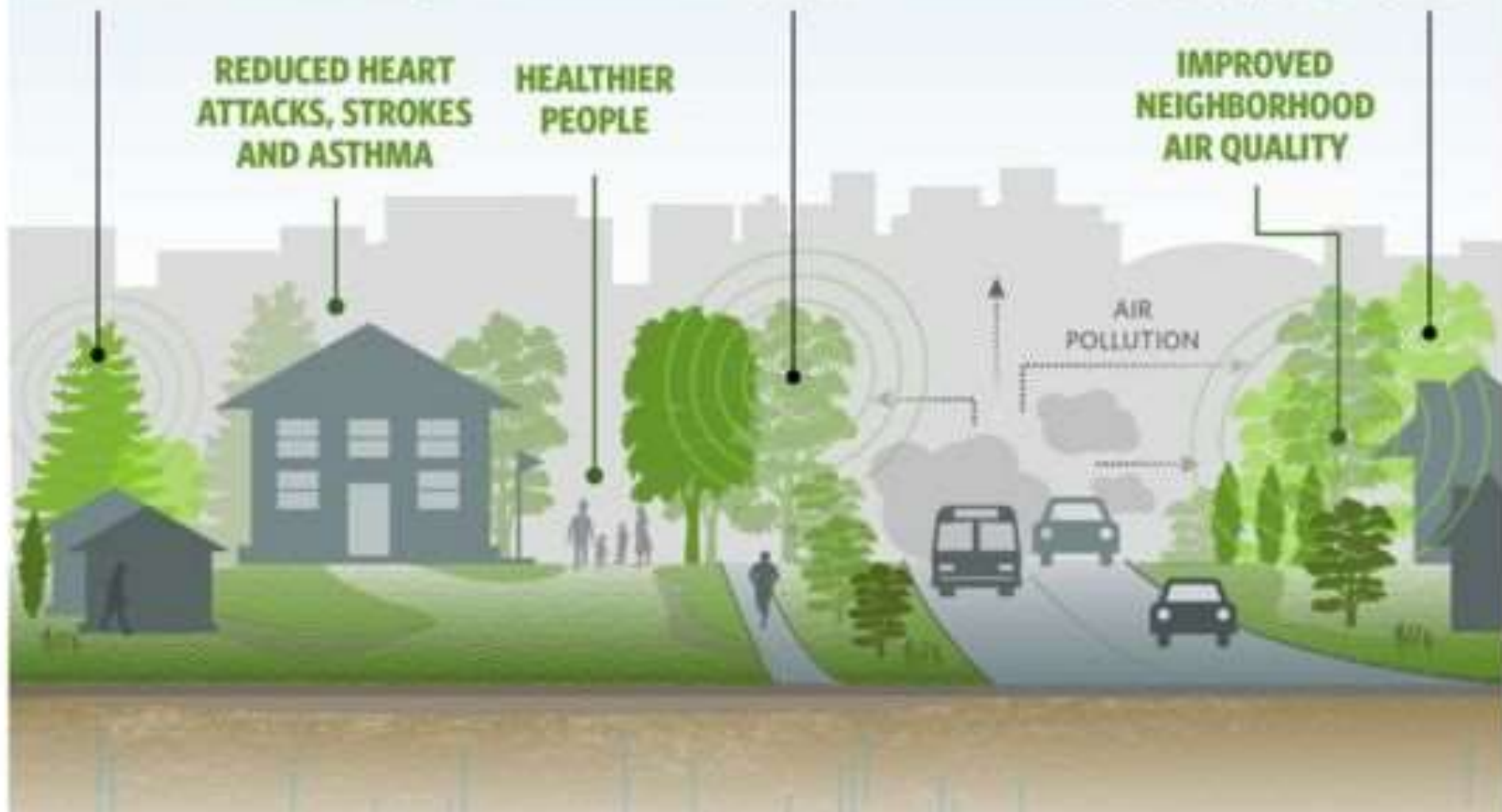
TREES absorb small particulate matter from the air

LARGE, HEALTHY TREES have the greatest per tree effects at pollution removal

**REDUCED HEART
ATTACKS, STROKES
AND ASTHMA**

**HEALTHIER
PEOPLE**

**IMPROVED
NEIGHBORHOOD
AIR QUALITY**





Hewitt, C.N., Ashworth, K. & MacKenzie, A.R. Using green infrastructure to improve urban air quality (GI4AQ). *Ambio* 49, 62–73 (2020).



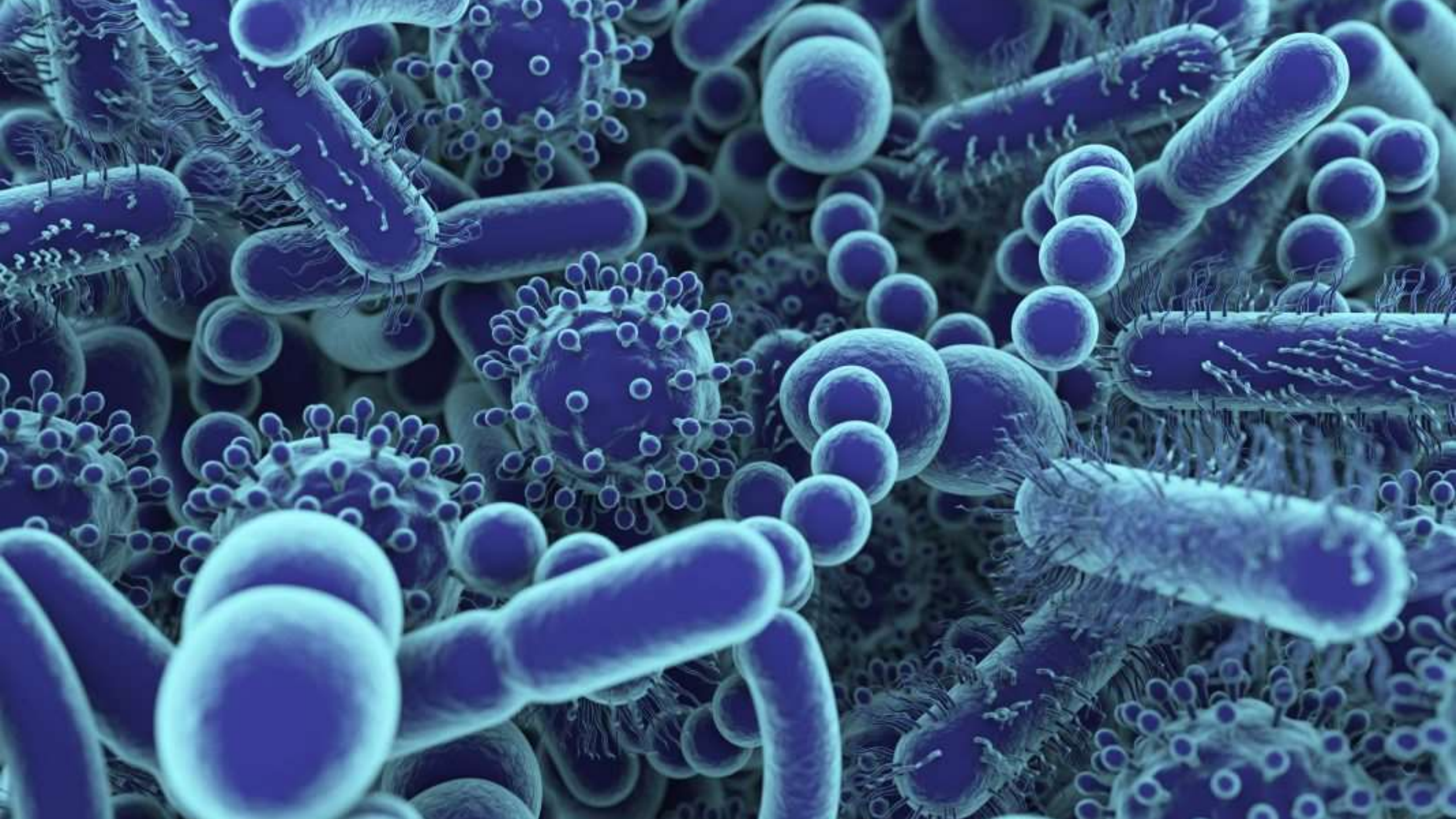






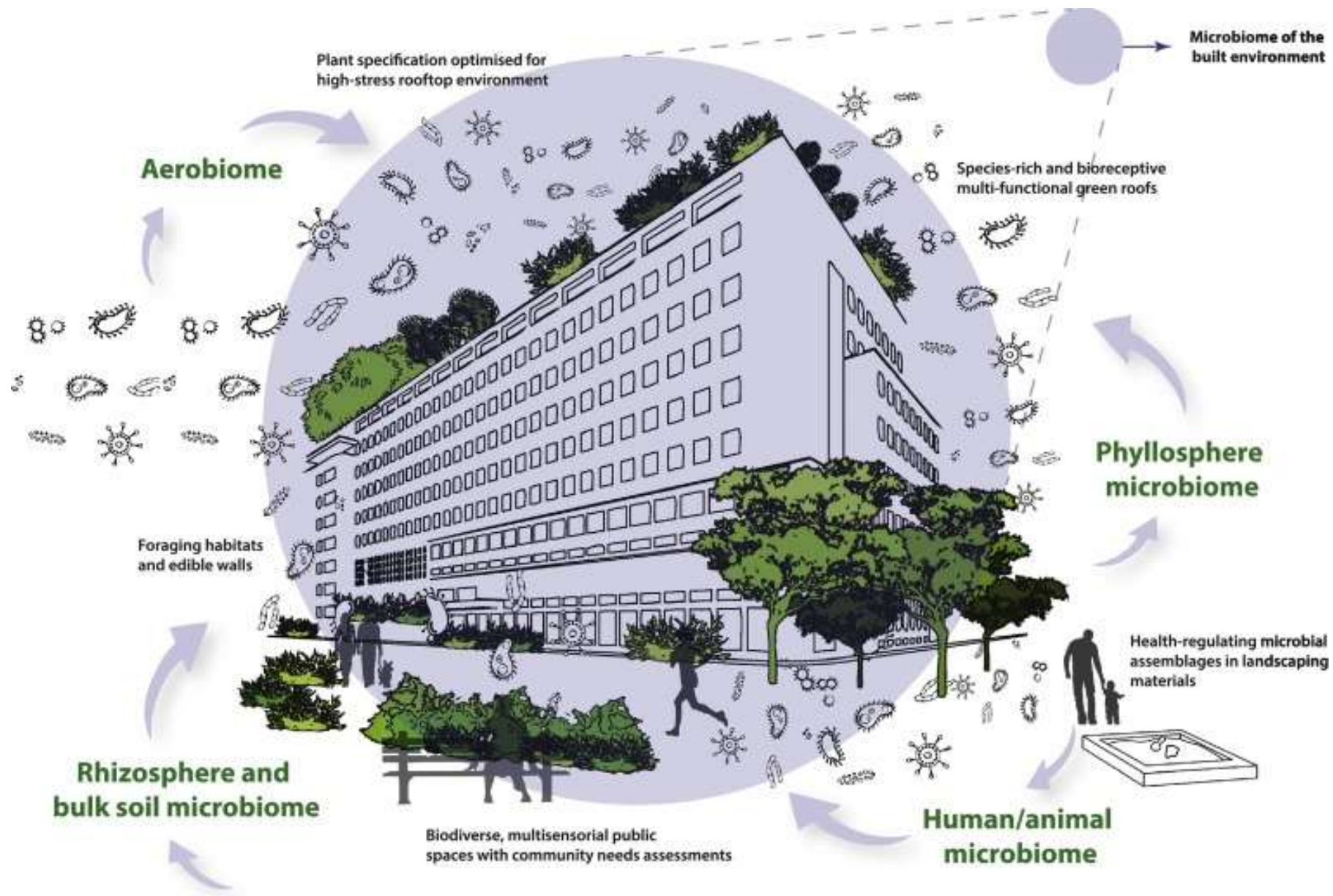
























**Ma ora che sta
sucedendo?**



PARK
TEMPORARILY
CLOSED
DUE TO COVID-19

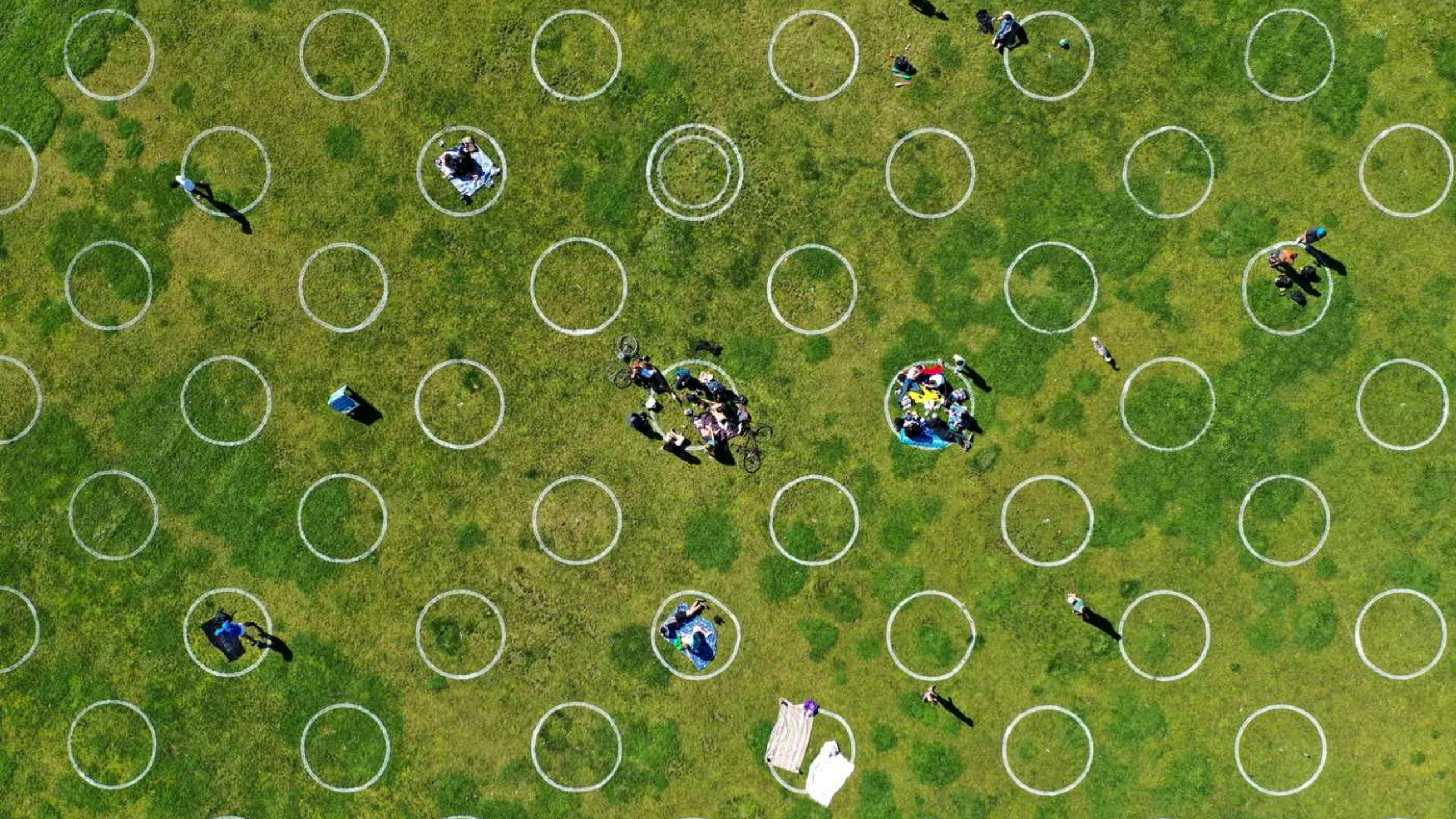
(**Full R.:** Italy, Spain, Norway, Egypt, Chile, Brazil, India, Portugal, Niger, Malaysia and Tunisia); partially restricted (**Partial R.:** UK, Kenya, Colombia, USA, Hong Kong, Japan); no restrictions to green spaces (**No R:** Kosovo, South Korea, Denmark, New Zealand).



This is what six feet looks like

Love your park 6ft apart!

***If you can't, it's time for you to find a less crowded park.
Do your part!***





64' - 00"

8' - 00"

6' - 00" 6' - 00"

110' - 00"





COVID-19

Cyflwynwyd system unffordd o amgylch
Cadwch o leiaf 2 fetr ar wahân i atal COVID-19
Diolch am eich cydweithrediad.

COVID-19

A one-way system has been introduced around
Please stay 2 metres apart to stop the spread of CO
Thank you for your co-operation.



Gweithio dros Gaerdydd, gweithio gyda'n gilydd
Working for Cardiff, working together



SafeEntry

For contact tracing, please scan the QR code to check in/out when entering and leaving Tras Link Park



Contact data collected by SafeEntry is used only by authorised personnel for contact tracing purposes and stringent measures are in place to safeguard the data in accordance with the Government's data security standards. Thank you for doing your part to keep Singapore safe.









3 SALUTE E BENESSERE



10 RIDURRE LE DISUGUAGLIANZE



11 SUSTAINABLE CITIES AND COMMUNITIES

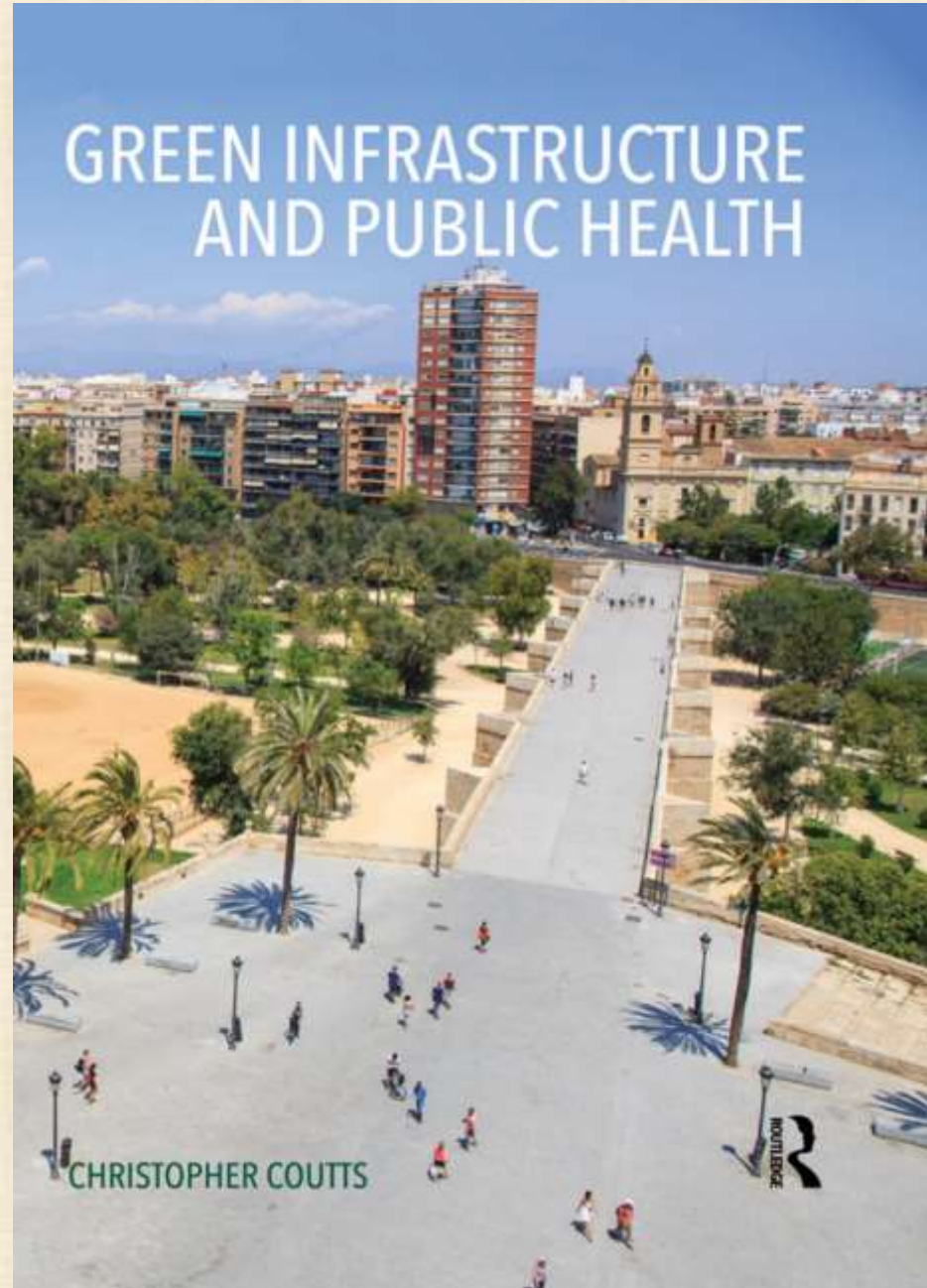




Pedro Calaza Martínez

INFRAESTRUCTURA VERDE

SISTEMA NATURAL DE SALUD PÚBLICA



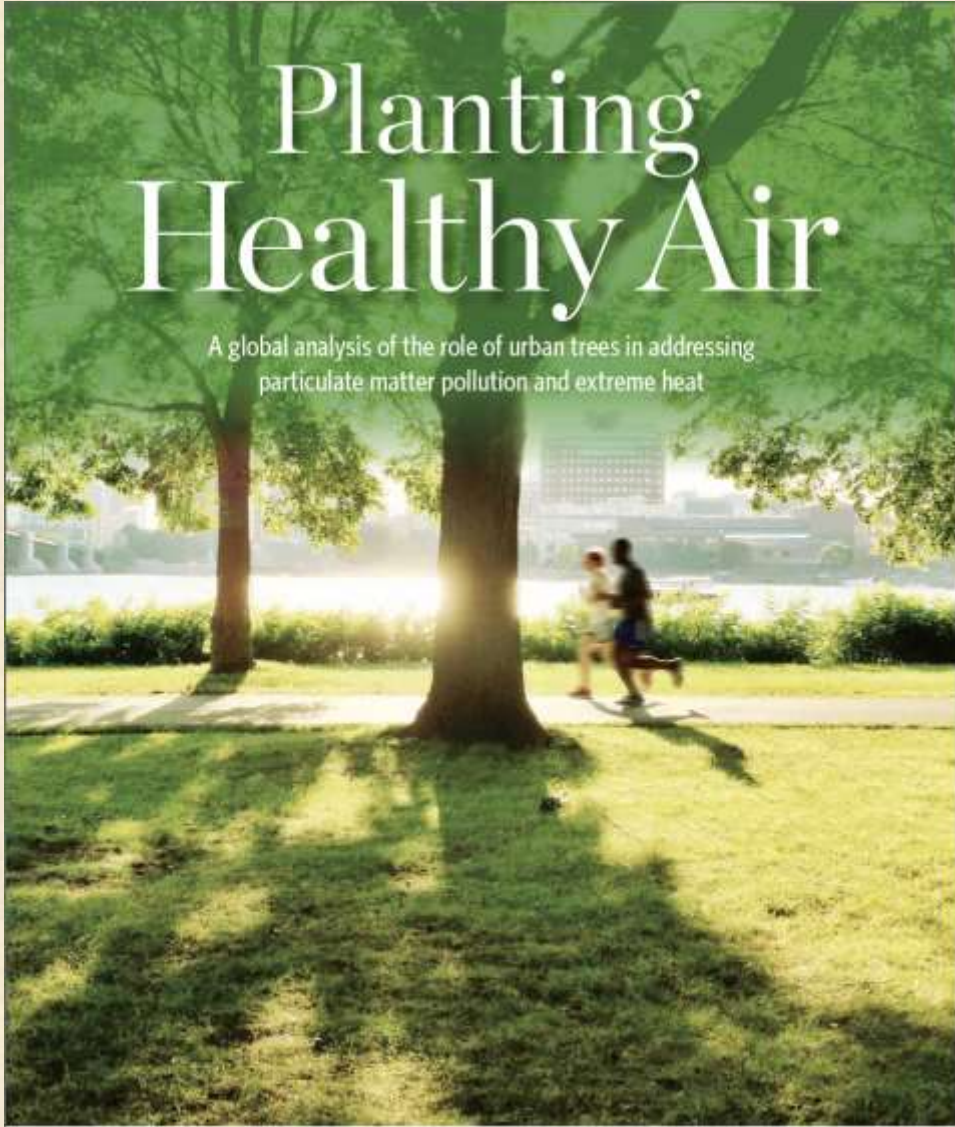
GREEN INFRASTRUCTURE AND PUBLIC HEALTH

CHRISTOPHER COUTTS

ROUTLEDGE

Planting Healthy Air

A global analysis of the role of urban trees in addressing particulate matter pollution and extreme heat



The Nature Conservancy



Funding Trees for Health

An Analysis of Finance and Policy Actions to Enable Tree Planting for Public Health



The Nature Conservancy



Food and Agriculture Organization
of the United Nations

Grazie dell'attenzione

<http://www.fao.org/forestry/urbanforestry/en/>

Email: simone.borelli@fao.org

