

Jelly

SYSTEMS AND TOOLS FOR LOCATING
BLOOM OF JELLYFISH AND PREDICTING
THEIR DISPLACEMENT TOWARDS
THE COAST



PROGETTO MEDITERRANEA

A DIRECT EXPERIENCE OF
ADVANCED CITIZEN SCIENCE
AND ITS SCIENTIFIC IMPACT IN THE MEDITERRANEAN SEA

Laura Giusti: Captain and Progetto Mediterraneo Scientific Projects Responsible

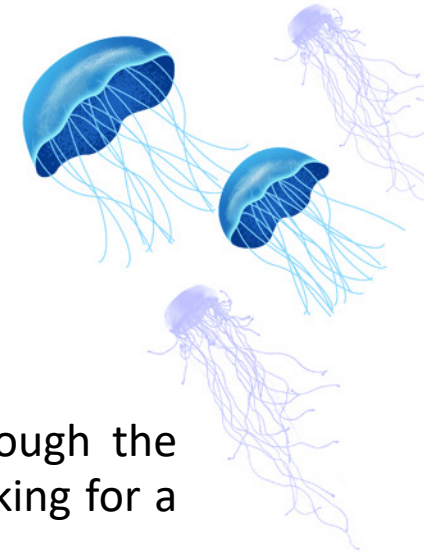


Jelly

SYSTEMS AND TOOLS FOR LOCATING
BLOOM OF JELLYFISH AND PREDICTING
THEIR DISPLACEMENT TOWARDS
THE COAST



PROGETTO MEDITERRANEA



An Italian nautical, cultural, scientific and social expedition that in 10 years has sailed through the Mediterranean sea, the Black Sea and the Portuguese, Spanish and Moroccan Atlantic sea looking for a new 'model of life' and trying to build the foundations for a united Mediterranean.

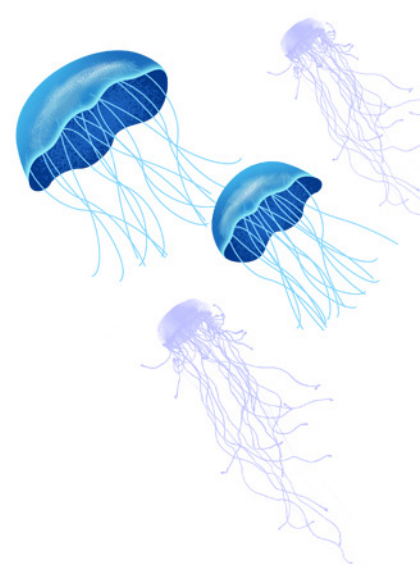
After 6 years of expedition, the Progetto Mediterraneo community has decided to continue for another 3 years. Here is the 2021-23 route:

- 2022: Sicily, Pelagie / Pantelleria, Malta, Ionian Calabria, Eastern Italy, Tremiti, Ancona, Venice, Trieste
- 2023: Peloponnese and all the Greek islands (one by one)

4 MAIN OBJECTIVES:

- Nautical
- Scientific
- Cultural
- Social





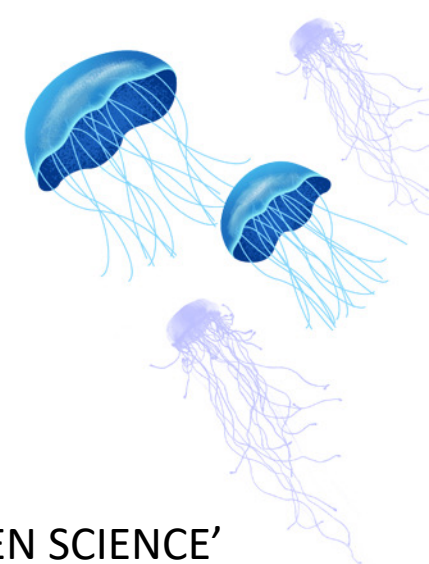
SCIENTIFIC OBJECTIVE AND CITIZEN SCIENCE

PROGETTO MEDITERRANEA AND ISPRA COLLABORATION:

‘Collection of environmental information to support environmental monitoring programs with a participatory process. The collaboration provides for the achievement of purposes of common interest that sensitize the citizen on the following areas:

- the protection of marine environments and protected species,
- recreational boating according to sustainable good practices;
- the collection of information on: entanglement (entanglement), cetacean / sea turtle sighting, jellyfish sighting for the identification of alien species, areas of plastic accumulation and marine litter
- support for national monitoring programs conducted by the responsible institutions.





JELLYFISH TYPE AND ADVANCED CITIZEN SCIENCE



From Citizen Science to **'ADVANCED CITIZEN SCIENCE'**

We are a group of people as very careful actors in data collection and sea monitoring.

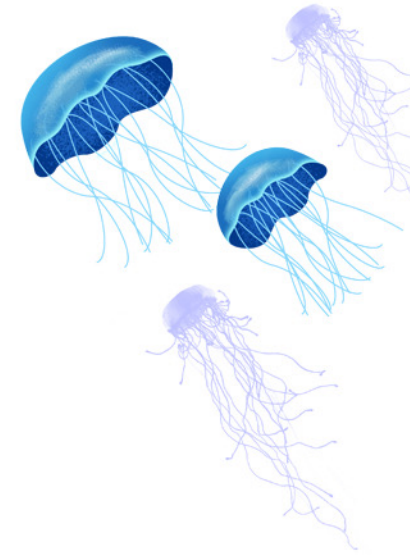
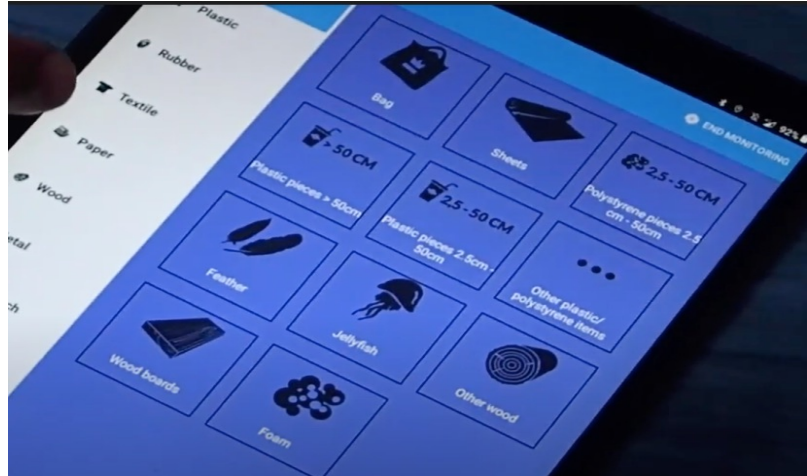
Following precisely all the procedures in the most consistent approach as per the ISPRA guidelines.

'ADVANCED' means that we, properly trained ordinary citizens and sailors, proactively apply the scientific methods according to the scientific research approaches with precise, standardized, measurable, methodical, systematic rules and procedures.



Jelly

SYSTEMS AND TOOLS FOR LOCATING BLOOM OF JELLYFISH AND PREDICTING THEIR DISPLACEMENT TOWARDS THE COAST



Jelly

SYSTEMS AND TOOLS FOR LOCATING BLOOM OF JELLYFISH AND PREDICTING THEIR DISPLACEMENT TOWARDS THE COAST

