

4.4.2. – Specie: SERPENTINE « VERDE DI PRATO »

Species: “ PRATO GREEN ” SERPENTINE

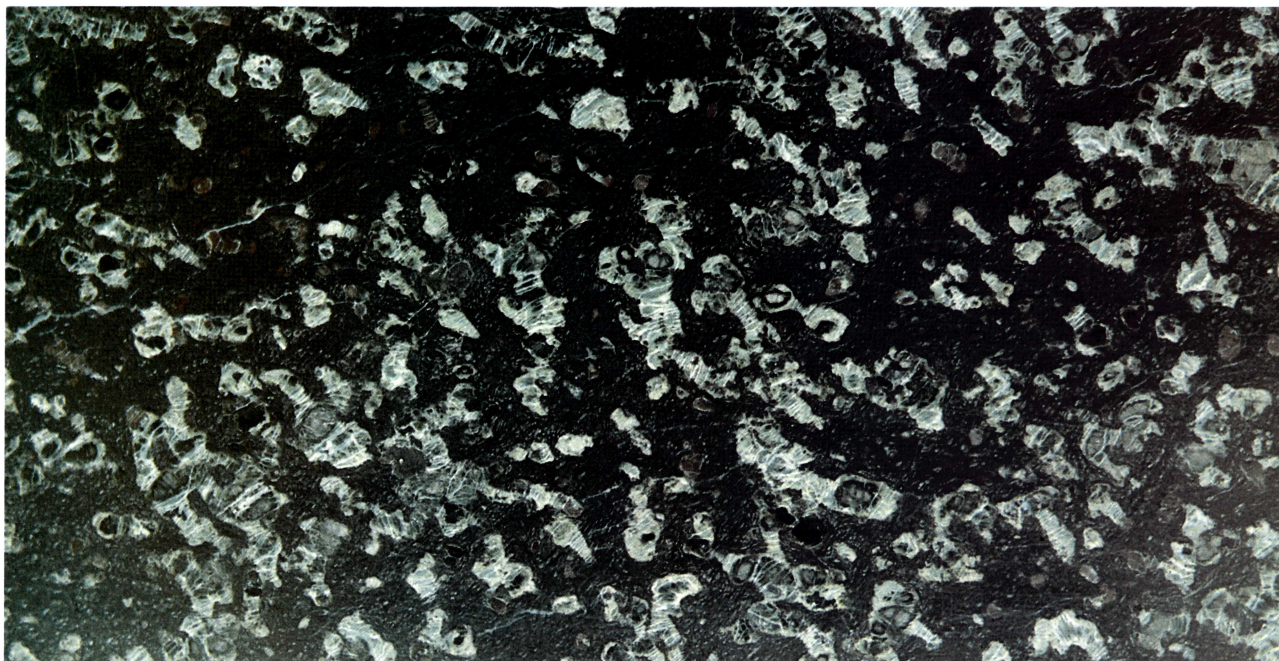


FIG. 158. – *Campione 158*: SERPENTINA VERDE DI PRATO – Eufotide Serpentinosa
(Gimigliano, Catanzaro, Italia)

Sample 158: PRATO GREEN SERPENTINE – Serpentinous Euphotides
(Gimigliano, Catanzaro, Italy)

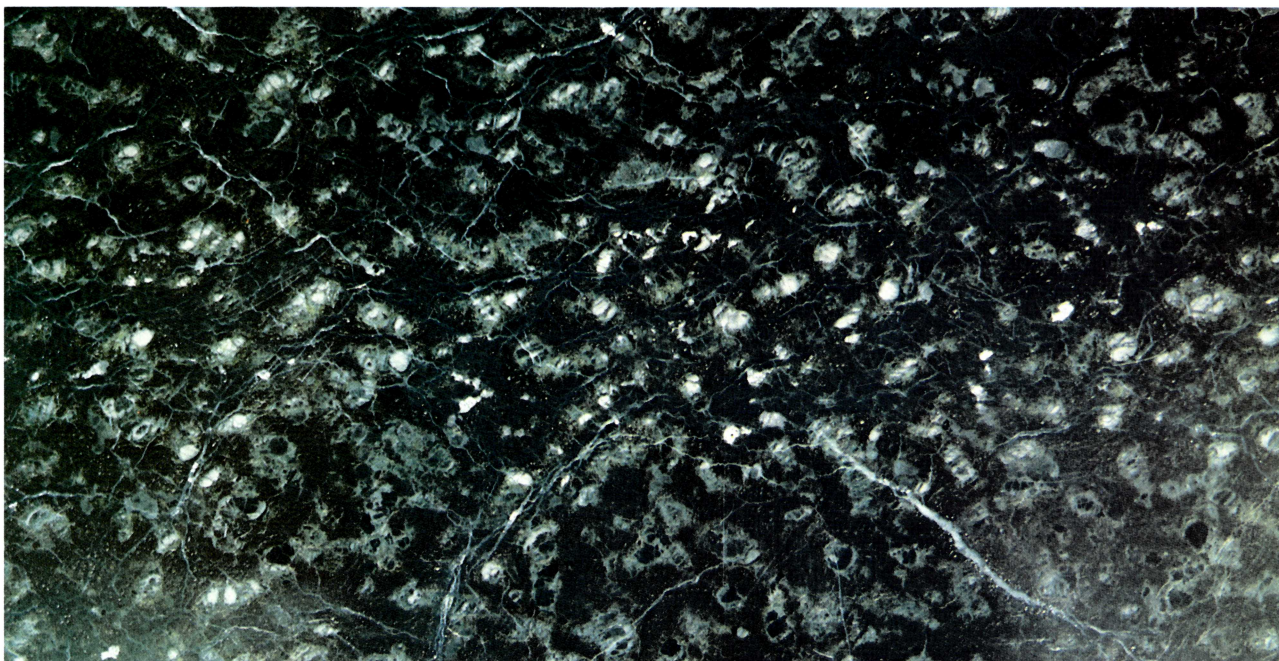


FIG. 159. – *Campione 159*: SERPENTINA VERDE DI PRATO MACCHIATA – Eufotide Serpentinosa
(Gimigliano, Catanzaro, Italia)

Sample 159: STAINED PRATO GREEN SERPENTINE – Serpentinous Euphotides
(Gimigliano, Catanzaro, Italy)

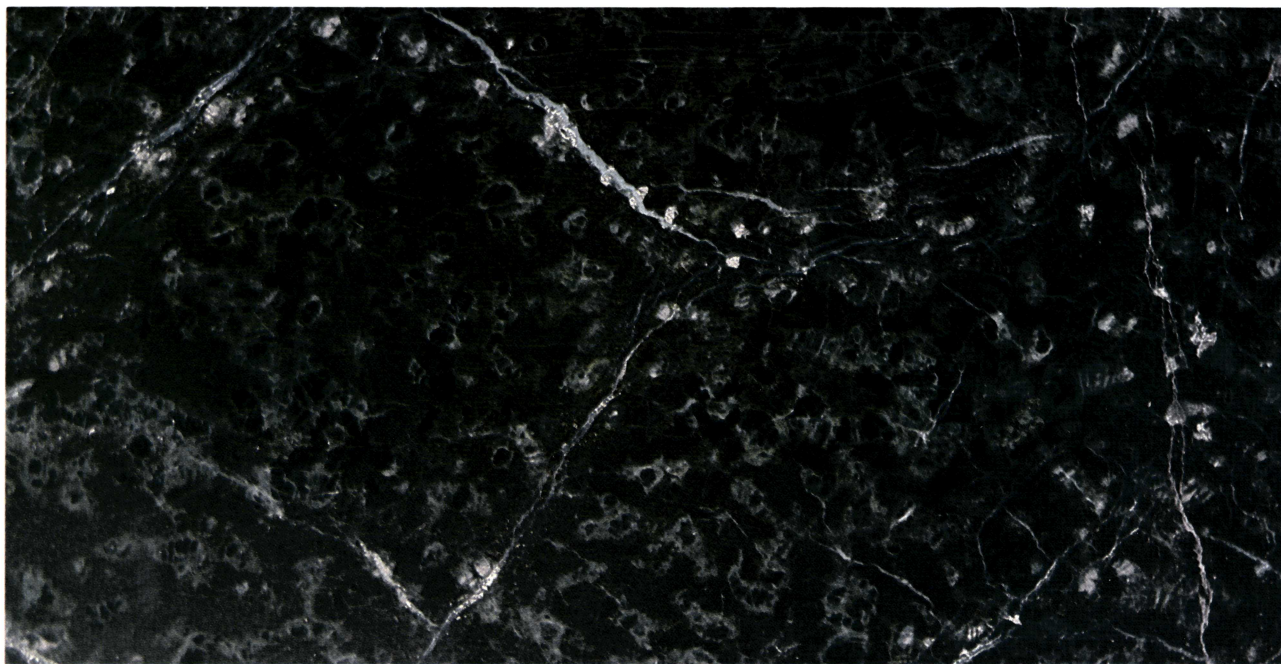


FIG. 160. – *Campione 160*: SERPENTINA VERDE DI PRATO VENATA – Eufotide Serpentinosa
(Provenienza ignota)

Sample 160: VEINED PRATO GREEN SERPENTINE – Serpentinous Euphotides
(Unknown provenance)



FIG. 161. – *Campione 161*: SERPENTINA VERDE DI PRATO ORBICOLARE – Eufotide Serpentinosa
(Monte Rufoli, Volterra, Italia)

Sample 161: ORBICULAR PRATO GREEN SERPENTINE – Serpentinous Euphotides
(Monte Rufoli, Volterra, Italy)



FIG. 162. – *Campione 162*: SERPENTINA VERDE DI PRATO NERA – Serpentina

(Cina)

Sample 162: BLACK PRATO GREEN SERPENTINE – Serpentine

(China)

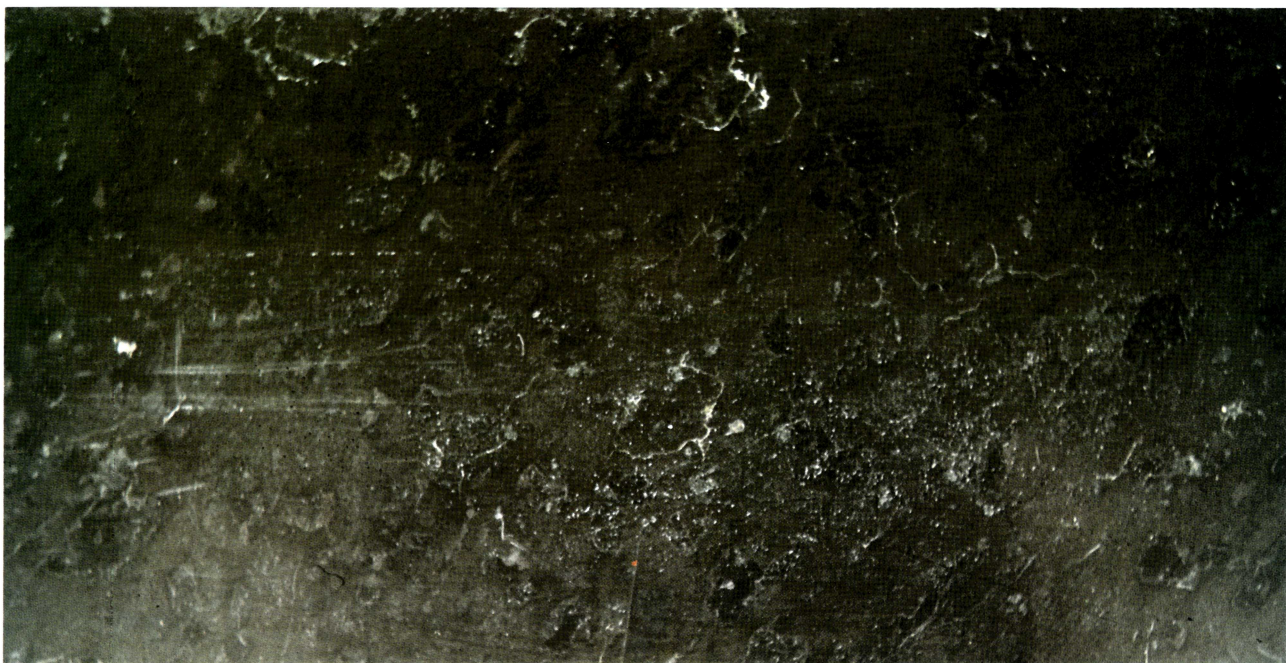


FIG. 163. – *Campione 163*: SERPENTINA VERDE DI PRATO BRUNA – Serpentina

(Provenienza ignota)

Sample 163: BROWN PRATO GREEN SERPENTINE – Serpentine

(Unknown provenance)