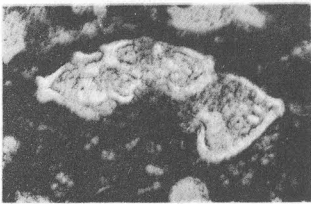
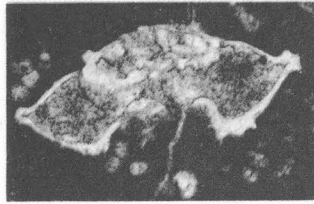


1a. Stampiano con *Neovalveolina* (a sin., N), *Bullalveolina* (a destra, B), *Halkyardia* (a destra, H), nummuliti e litotamni, 14 ×.

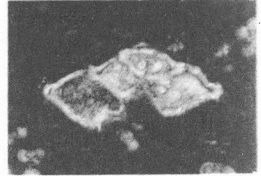
1b. Confini dello Stampiano con l' Aquitaniano (prima apparizione delle lepidocycline presso ←). M. Torretta. 7 ×.



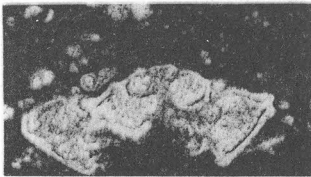
2



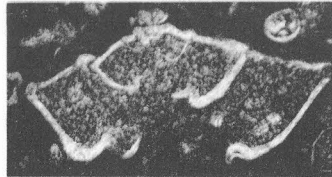
3



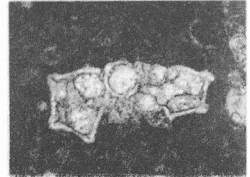
4



5



6



7

2, 3, 5. Forma intermedia *G. appenninica*-*G. linnei*.

2: Prof. II, Strato 12; 3: Prof. I, Strato 13;

5: Prof. III, Strato 11. 52 ×.

4. *Globo truncana appenninica* n. sp. Prof. II, Strato 3. 52 ×.

6. *Globo truncana stuarti* (DE LAPP.) Prof. II, Strato 24. 52 ×.

7. *Globo truncana linnei* (D'ORB.) Prof. I, 27. 52 ×.

* O. Renz fot.